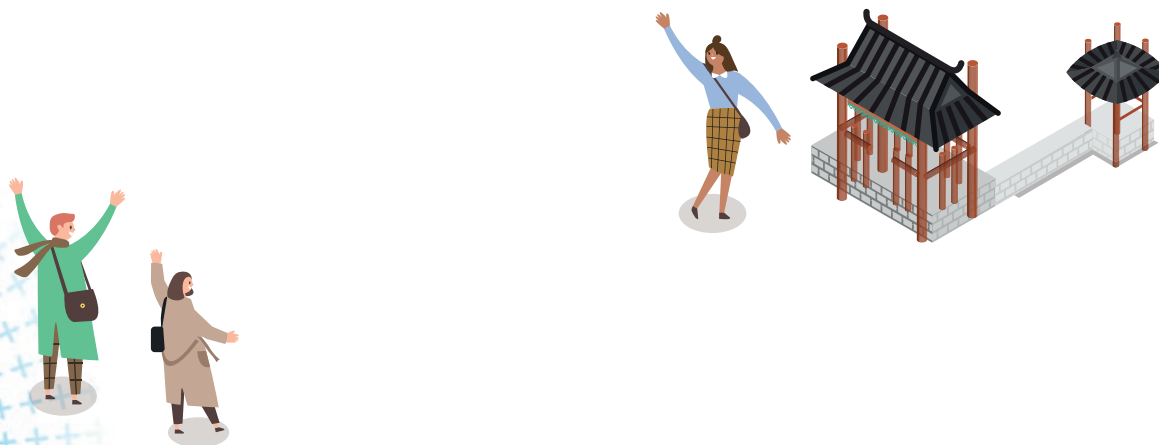


KANGWON NATIONAL UNIVERSITY

PROSPECTUS

The title 'PROSPECTUS' is rendered in large, bold, sans-serif letters. The 'P' is blue, 'R' is blue, 'O' is a yellow circle containing a traditional Korean palace (Gyeongju), 'S' is grey with pink cherry blossoms, 'P' is blue with a traditional Korean mask (Guguk), 'E' is grey with a woman sitting on the ground, 'C' is orange with a cherry blossom, 'T' is grey with a red trolley and a statue, and 'U' is blue with a person sitting on top. The background features a large blue circular pattern of small crosses in the top right and bottom left corners.

FOR INTERNATIONAL
STUDENTS



ABOUT KNU

History of KNU

Kangwon National University is one of the core national universities in Korea. With a history of 73 years, KNU has been educating prospective students who can lead the national and international community in various fields.

Global KNU

KNU is located in Chuncheon, Samcheok and Dogye in Gangwon province, and has 1,026 international students from 60 countries in our undergraduate, graduate, Korean language program. And KNU has global network connecting 275 universities, in 55 countries. Also, KNU has been making sincere efforts to respond to the rapidly changing global era. To this end, KNU has been actively participating in various international development cooperation activities with many countries.

Contents

- 02 ABOUT KNU
- 03 DEMOGRAPHICS
- 04 ACADEMIC PROGRAMS
- 05 ACADEMIC STANDINGS
- 06 RESEARCH & DEVELOPMENT
- 07 INDUSTRIAL-ACADEMIC COOPERATION
- 08 DEGREE PROGRAMS & SCHOLARSHIP INFORMATION
- 10 INTERNATIONAL LANGUAGE INSTITUTE : KOREAN LANGUAGE PROGRAM
- 11 GLOBALIZATION PROGRAM & GLOBALIZATION STATUS
- 12 VARIOUS INTERNATIONAL PROGRAMS FOR STUDENTS
- 17 ACCOMMODATION (DORMITORY)
- 18 CAMPUS LIFE
- 19 ABOUT CHUNCHEON
- CONTACT



DEMOGRAPHICS

FACTS

As of April, 2019



150,000 Alumni



22,414 Students

Undergraduate 19,800
Graduate 2,614



2,565 Professors

Tenure-track faculty 987
Non tenure-track faculty 1,578



1,026 International Students

Undergraduate School

Undergraduate 316
Exchange Students 154
Dual Degree 4

Graduate School

Master 274
Ph.D. 83
Combined Program 33
Exchange Students 2

Korean Language Program

Language Training Students 160



ACADEMIC PROGRAMS

17
Colleges
(Fields)

115
Departments

Undergraduate

• 17 College (Field)

Chuncheon Campus

College of Business Administration
College of Agriculture and Life Sciences
College of Animal Life Sciences (Natural Sciences)
College of Art and Culture · Engineering
College of Education
College of Social Sciences
(Humanities & Social Sciences)
College of Forest & Environmental Science
(Natural Sciences)
College of Veterinary Medicine
College of Pharmacy
College of Nursing
College of Biomedical Sciences (Natural Sciences)
College of Humanities
(Humanities & Social Sciences)
College of Natural Sciences (Natural Sciences)
College of Information Technology

Samcheok & Dogye Campus

College of Engineering
College of Humanities, Social Sciences and Design, Sports
College of Health & Welfare (Natural Sciences)

• 115 Department / Majors

* Departments NOT available to international students : Veterinary Medicine, Pharmacy, Nursing (Chuncheon Campus)

1
General
Graduate
School

3
Professional
Graduate
Schools

6
Special
Graduate
Schools

Graduate

• 1 General Graduate School

Chuncheon Campus

Graduate School of Humanities and Social Science
Graduate School of Natural Science
Graduate School of Engineering
Graduate School of Art & Sports
Graduate School of Medicine
Graduate School of Interdisciplinary Programs
83 Master's Programs
75 Doctoral Programs
65 Combined Programs

Samcheok Campus

Graduate School of Humanities and Social Science
Graduate School of Natural Science
Graduate School of Engineering
Graduate School of Art & Sports
26 Master's Programs
13 Doctoral Programs
9 Combined Programs

• 3 Professional Graduate Schools

* NOT available to international students

Chuncheon Campus

Graduate School of Law
Graduate School of Medicine

Samcheok Campus

Graduate School of Disaster Prevention

• 6 Special Graduate Schools

* NOT available to international students

Chuncheon Campus

Graduate School of Business Administration
Graduate School of Education
Graduate School of Industry
Graduate School of Information Science
& Public Administration
Graduate School of Green and Life Industry Policy

Samcheok Campus

Graduate School of Industrial Science

Academic Programs Details

<http://www.kangwon.ac.kr/english/contents.do?key=1293&>



ACADEMIC STANDINGS

KANGWON NATIONAL UNIVERSITY

2 **No.2**
Percentage of
Inbound
Exchange Students

3 **No.3**
Percentage of
Outbound
Exchange Students

5 **No.5**
International
Research
Network



Rankings among domestic national universities
According to QS (Quacquarelli Symonds) * 2020 Asia University Rankings

12 **No.12**
Life Science Field

13 **No.13**
Clinical, Pre-Clinical,
Health Care Field

15 **No.15**
Physical Sciences
Field



Rankings among domestic universities
According to THE (TIMES HIGHER EDUCATION) * 2020 World University Rankings

22 **No.22**
Among Domestic
Universities

2 **No.2**
Environment &
Ecology Field

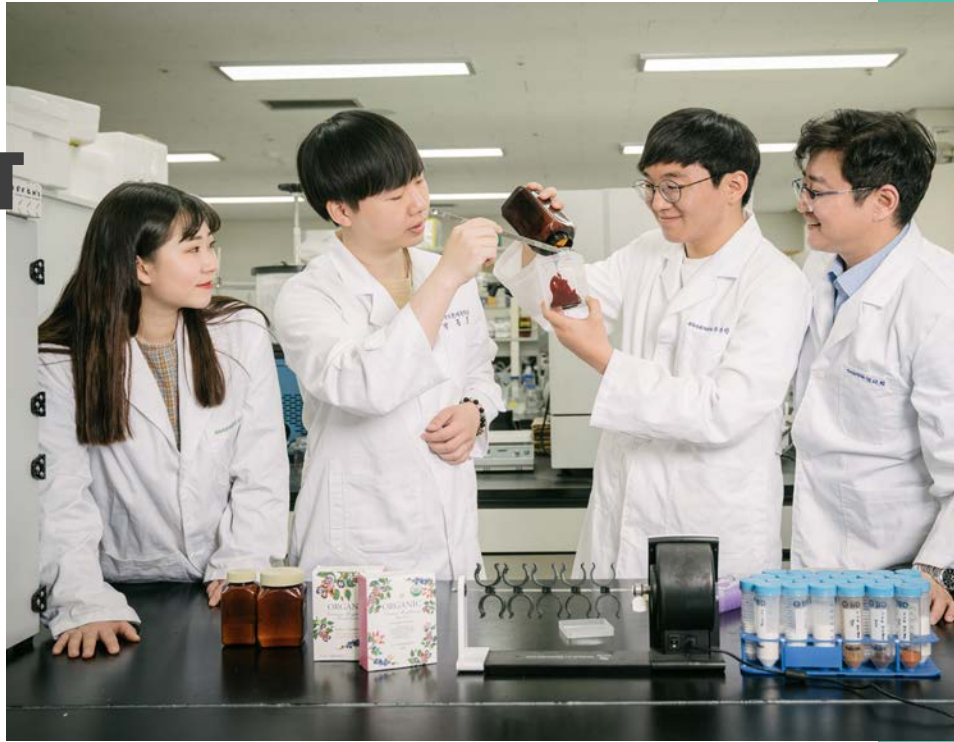
3 **No.3**
Agricultural
Science Field

Rankings among domestic universities
According to U.S. NEWS & WORLD REPORT * 2020 Best Global Universities Rankings



RESEARCH & DEVELOPMENT

KNU has recently been selected for national R&D projects in various fields and proven its reputation as a flagship national university and competitiveness in the research field.



01

Senior Research Support Project (1~5 years; 36 tasks; 11.6 billion KRW)

Maximize the research capabilities of individual basic researchers in the pre-science field to foster talented researchers, produce excellent research results, and nurture global research leaders.

02

Basic Research Support Project for Individuals in the Engineering and Science Field (1~10 years; 69 tasks; 9.8 billion KRW)

Basic support grassroots individual foundation research in science and engineering to expand transformational research base and enhance national research capabilities.

03

Kangwon Cultural Research Institute selected for 'Central Research Institute Support Project' (6 years; 1.53 billion KRW)

Establish a model for the local cluster by conceptualizing several prototypes of Gangwon-do, including scenic sites, Confucian, Buddhist, folklore, Catholic, modern and contemporary cultural heritage in Gangwon-do, and academically experiencing the process of regional identity formation.

04

Forest Science Research Institute selected for 'Central Research Institute Support Project for the Engineering and Science Field' (9 years; 5.2 billion KRW)

Development of high-value bio-nano new materials through convergence and joint research of forestry materials engineering with medical materials engineering, and bioengineering using abundant forest biomass in Gangwon Province.

05

Research Fellow Support Project (1~3 years; 9 tasks; 1.34 billion KRW)

Maintain continuity of research activities and induce quality improvement in research by providing Ph.D.-acquired researchers with opportunities to train at research institutes.

**Selected for various
national R&D projects**

INDUSTRIAL-ACADEMIC COOPERATION

LEADING PROJECTS FOR INDUSTRIAL-ACADEMIC COOPERATION PROMOTING REGIONAL DEVELOPMENT

LINC+ (Leader in Industry-University Cooperation) Program

LINC+ runs educational programs that are friendly to industry-academic cooperation and carry out industry-academic cooperation activities with local communities and businesses.

LINC is supported with a grant of USD 10 million from the NRF (National Research Foundation of Korea) for three years (2019~2021). Employment program, start-up program, corporate support will be provided. And it created a new major and curriculum in connection with the program for students.

Idea Lab

This is a specialized curriculum designed to solve the problem of Human Resource mismatch and to alleviate employment difficulties of young people by coordinating and reorganizing the college curriculum to foster specialized talents that meet the needs of the industries.

KNU Start-Up CUBE & Maker Space

- Start-Up Cube operates a variety of businesses and programs for the growth and success of its founders and those preparing to start their own businesses.
- Maker Space provides comprehensive support for equipment and manpower to discover and spread creative ideas from university students and industries and to commercialize them.

Campus Innovation Park (Regional Development Platform to Achieve Innovative and Inclusive Growth)

Kangwon National University was selected as the only national university for the Campus Innovation Park Project in 2019. For this project, the central and local government will invest 44.7 billion won on the 66,500 m² site of its Chuncheon campus by 2022 constructing a 10-story building called "Platform Innovation Center" which includes spaces for high-tech companies in the bio-health care and cultural industries, exhibition halls and industry-academia center. As a two-stage project, the Social Innovation Center (military recruitment support space), the Cultural Innovation Center (film establishment space and movie creation studios, etc.) and the Life Innovation Center (university resident cooperation lab, conventions, etc.) will be established by 2026.

Inquires & Details

- KNU LINC+ - <http://linc.kangwon.ac.kr>
- KNU Start-Up CUBE
- <https://cube.kangwon.ac.kr/portal/index>



KNU Start-Up Cube & Maker Space

DEGREE PROGRAMS & SCHOLARSHIP INFORMATION

Tuition Fees As of 2019

At the time of publishing, 1USD=1,211won

Classification		Humanities & Social Sciences	Natural Sciences	Engineering	Sport Science	Arts	Note
Tuition (per semester)	Undergraduate	₩1,713,000 (\$1,413)	₩1,916,000 ~ 2,101,000 (\$1,580 ~ 1,658)	₩2,219,000 (\$1,830)	₩2,219,000 (\$1,830)	₩2,310,000 (\$1,905)	Including Admission Fees
	Graduate	₩2,199,000 (\$1,814)	₩2,695,000 (\$2,223)	₩2,804,000 (\$2,313)	₩2,858,000 (\$2,358)	₩3,047,000 (\$2,513)	Including Admission Fees

Admission Procedure

Beginning of Semester for Admitted Students	Admission Procedure			
	Online Application and Submission of Documents	Interview	Acceptance Notification	Payment of Tuition
2nd March	*November	November - December	Mid - December	December - January Next Year
1st September	*May	May - June	Mid-June	June - July

* Admission procedures may change based on the academic schedule.

Eligibility for Application

Nationality	Undergraduate	<ul style="list-style-type: none"> A foreigner whose parents are both foreigners A foreigner who has completed the education courses corresponding to Korea's primary, secondary, and upper secondary education in countries outside Korea. 	
	Graduate	<ul style="list-style-type: none"> A foreigner whose parents are both foreigners A foreigner who has completed the education courses corresponding to Korea's primary, secondary, and upper secondary education in countries outside Korea. 	
Academic Backgrounds	Undergraduate	First-Year Applicant	An applicant who has graduated (or expects to graduate) from high school or upper secondary school
		Transfer Students	<ul style="list-style-type: none"> An applicant who has graduated (or expects to graduate) from a junior college (community college) in Korea or overseas. An applicant who has completed at least 2 years (4 semesters) of school from a 4 year university in Korea or overseas, and earned the credits prescribed as equivalent to the 2 year completion criteria from the previously enrolled university ※ For sophomore transfer, one who has completed (or expects to complete) a 1 year (2 semesters) program
	Graduate	<ul style="list-style-type: none"> Master, Master and Ph.D. combined program : An applicant who has earned (or is expected to earn) a bachelor's degree Ph.D. Program : An applicant who has earned (or is expected to earn) bachelor's and master's degrees 	

Language Proficiency	Under graduate	<ul style="list-style-type: none"> • An applicant holding level 3 or higher in the Test of Proficiency in Korean (TOPIK) • An applicant who has completed level 4 or higher class of the Korean language program at KNU • An applicant who has an official English score of at least TOEFL (PBT 530, CBT 197, or iBT 71), IELTS 5.5, CEFR B2, TEPS 600 (New TEPS 326), or TOEIC 700 • Arts College : An applicant who has completed at least 1 year of a Korean language program from a university in Korea <ul style="list-style-type: none"> - Except Department of 'Sport Science', 'Design', 'Multi Design' and 'Leisure Sports'. • KGSP students, foreign government supported scholarship students, applicants from the countries whose native language is English (US, Canada, UK, South Africa, New Zealand, Australia, Ireland). • An applicant who has fulfilled at least one of the following language proficiency conditions listed above.
	Graduate	<ul style="list-style-type: none"> • An applicant holding level 3 or higher in the Test of Proficiency in Korean (TOPIK) • An applicant who has completed level 4 or higher class of the Korean language program at KNU • An applicant who has an official English score of at least TOEFL (PBT 530, CBT 197, or iBT 71), IELTS 5.5, CEFR B2, TEPS 600 (New TEPS 326), or TOEIC 700 • Government invited scholarship students, foreign government supported scholarship students, applicants applying for the Departments in the field of Arts and Sports (Except 'Department of Sport Science', 'Department of Design', 'Department of Visual & Multimedia Design, and 'Department of Physical Education'), Natural Science or Engineering, applicants from the countries whose native language is English (US, Canada, UK, South Africa, New Zealand, Australia, Ireland). • Applicants submitting the Letter of Recommendation for Excellent Researcher by the KNU prospective academic advisor. • An applicant who has fulfilled at least one of the following language proficiency conditions listed above.

* Eligibility for application is as of 2020, and details may change. For more information, please refer to the application instructions.

Scholarship Information

- Undergraduate Scholarships
- Graduate Scholarships

Link to Scholarship Guidelines

<http://www.kangwon.ac.kr/english/contents.do?key=1381&>



Best KNU Scholarship Program

- Master's/Doctor's courses
- **New Students**
Full scholarship for the first semester (tuition fees, insurance, living expenses)
- **Enrolled Students**
Full scholarship (tuition fees, insurance, living expenses)
※Those admitted as a BEST-KNU Scholarship student should meet the minimum requirement on GPA to receive the scholarship.

GKS Scholarship Program

Promote international educational exchanges and friendly relationships by providing opportunities for foreign students to study in a higher educational institution in Korea

- **Program** : Korean Language Program (1 Year)+Bachelor's (4 Years)/Master's (2 Years)/Doctoral (3 Years)/Research (6 months to 1 year)
- **Benefits** : Airfare, Settlement Allowance, Monthly Allowance, Research Allowance, Korean Language Training, Tuition, Thesis Printing Fee, Medical Insurance, Scholarship Completion Grants, Korean Proficiency Grants (for advanced TOPIK level holders only)

Inquires

Email. enter@kangwon.ac.kr

Admission Details

<http://www.kangwon.ac.kr/english/selectBbsNttList.do?bbsNo=276&key=1283&>



DIVISION OF LANGUAGE EDUCATION : KOREAN LANGUAGE PROGRAM

Program Schedule

Semester		Period	Placement Test	Application Period (Application for D-4 Visa)	Application Deadline (No Need to Apply for D-4 Visa)
Year 2020	Spring	March 16 -May 27	March 5	Year-round	~ March 6
	Summer	June 15 -August 21	June 4	Year-round	~ June 5
	Fall	September 7 - November 19	August 27	Year-round	~ August 28
	Winter	December 7 -February 18, 2021	November 26	Year-round	~ November 27
Year 2021	Spring	March 15 -May 25	March 4	Year-round	~March 5
	Summer	June 15 -August 20	June 3	Year-round	~June 4
	Fall	September 13 -November 24	September 2	Year-round	~September 3
	Winter	December 13 -February 23, 2022	November 29	Year-round	~November 30

Eligibility

A high school graduate or someone who possesses an equivalent academic background

Tuition Fees 1USD=1,211KRW

- **Tuition Fees** : KRW 1,200,000 (About \$990) per semester
- **Application Fee** : KRW 70,000 (About \$57) (only for first registration)

Dormitory Information As of 2020

Dormitory Building	Type	Fees (1USD=1,211won)		Notes
		Spring, Fall (based on 4 months)	Summer, Winter (based on 2 months)	
Global Dormitory 2	Room for 2 people	Approx. KRW 670,000 (\$553)	Approx. KRW 450,000 (\$371)	No kitchen

Inquires

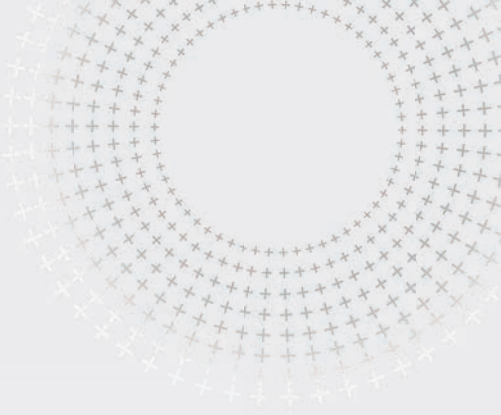
Email. langcntr@kangwon.ac.kr

Details

<http://www.kangwon.ac.kr/english/contents.do?key=1424&>



GLOBALIZATION PROGRAM & GLOBALIZATION STATUS



- Accredited by IEQAS (International Education Quality Assurance System (2016. 3)
- Selected to participate CAMPUS Asia-AIMS Program (2016.7)
- Global Partnerships with 55 countries, 275 universities (based on 2019. 10)

275 Universities in 55 Countries International Partners

[October, 2019]



VARIOUS INTERNATIONAL PROGRAMS FOR STUDENTS

KNU Student Exchange Program

A student from sister university of Kangwon National University may attend one or two semesters at KNU and return to their school to receive credits. A student must obtain an official recommendation from their school to apply as an exchange student, and the tuition fees should be paid to their original school.



Program Contents

- A variety of academic fields
- Exempted from tuition fees of KNU
- One hour travel to/from Seoul by bus or subway
- Buddy Program
- Incheon international airport pick-up service
- A variety of cultural events (Culture Day, Picnics, Learning Samulnori performance, Hanbok wearing experience, Farewell Party, and etc.)
- Dormitory guaranteed (the student must cover the cost)

Eligibility

- A student who is able to take lectures in English or Korean
- A student with a GPA of 3.0 (out of 4.5) or higher, or 2.67 (out of 4.0) or higher
- A student who has completed at least two semesters in their home school

Inquires

E-mail. intn@kangwon.ac.kr (Non-Asia region)
intnknu@kangwon.ac.kr (Asia region)

Application Deadline

- **Spring Semester** : November 20
- **Autumn Semester** : May 20

Period of Study

- **One or two semesters**
- **Spring Semester** : March to June
- **Autumn Semester** : September to December

Financial Support

- **Tuition and fees** : Application, admission and tuition fees are waived.
- **Scholarship** : Participants may have an opportunity to receive a K-PIES and GKS scholarship.

Details

<http://www.kangwon.ac.kr/english/contents.do?key=1407&>



KNU INTERNATIONAL SUMMER PROGRAM

It provides foreign students from sister universities with enriching cultural and educational experience for two weeks in the summer session. Visiting students can interact with enrolled students of KNU.

Program Contents

- **Basic Korean Language Classes**
 - **Special Lecture (Topic : Selected Topics from Academic Program)**
 - Various Cultural Experience
 - **Field Trip** : Seoul Tour, Cheong Wa Dae (Blue House), Chuncheon& Samcheok Campus, DMZ, Leading Companies in Korea
- * Detailed programs are subject to change depending on circumstances.

Eligibility

- An enrolled student from a sister university of KNU who has received recommendation from their home university.
- A student who can communicate in English with no difficulty and has a great interest in learning Korean language and culture.

Operation Period

2-weeks (End of June-Early July)

Inquires

E-mail. intn@kangwon.ac.kr (Non-Asia region)
intnknu@kangwon.ac.kr (Asia region)

Details

<http://www.kangwon.ac.kr/english/contents.do?key=1408&>



Application Deadline

Sister University recruited recommended students in February

Financial Support

Kangwon National University supports accommodation, meals, program participation fees.

* Students pay airfare, travel insurance, bus fee from Chuncheon to Incheon international airport and, personal allowance.



CAMPUS Asia-AIMS PROGRAM

(ASIAN INTERNATIONAL MOBILITY FOR STUDENTS)

This is a student exchange program funded by the Ministry of Education, and is carried out by universities in the ASEAN countries that signed exchange agreement with KNU's CAMPUS Asia-AIMS PROGRAM (hereinafter AIMS PROGRAM). It cultivates participating students into global business experts who can converge with ASEAN culture through experiences with ASEAN region, culture, commerce, society, history and trade, etc.



Field

International Business
Agriculture and Resource Economics

Advantages

- Support the local expenses for the participating students are provided by the government
- Operation of AIMS Buddy Program
- Incheon international airport pick-up service
- A variety of cultural and local event including ski camp and DMZ tour
- A variety of international trade and management programs (Participation in GTI International Trade & Investment EXPO, participation in various forums, hands-on experience in connection with GTEP, etc.)
- Dormitory guaranteed (The student must cover the cost).

Details

<http://www.kangwon.ac.kr/english/contents.do?key=1410&>



Partner Universities of KNU AIMS Program

- (Malaysia) UiTM
- (Indonesia) BINUS University
- (Thailand) Kasetsart University
- (Vietnam) Foreign Trade University
- (Brunei) Universiti Brunei Darussalam

Website of AIMS Program

- **Kangwon National University AIMS Program**
- <http://aims.araon.biz/>
- **Korea AIMS Program** - <http://aims.campusasia.kr>
- **SEAMEO RIHED** : Headquarter of AIMS program
- <https://rihed.seameo.org/programmes/aims/>

Inquires

E-mail. intnknu@kangwon.ac.kr
(KNU Office of International Affairs)
aimsknu@kangwon.ac.kr (KNU AIMS)

HIGHER EDUCATION FOR ASEAN TALENTS (HEAT) : SCHOLARSHIP PROGRAM

As a scholarship program sponsored by the Korean Government, Higher Education for ASEAN Talents (HEAT) aims to provide higher education opportunities to faculty members of ASEAN countries. Particularly, HEAT invites faculty members who hold a master's degree and wish to acquire a doctoral degree in order to enhance their knowledge and expertise in their research fields.

Fields of Study

- **Agricultural & Resource Economics** (Ph.D. in Economics)
- **International Trade** (Ph.D. in Business Administration)

Curriculum and Selective Courses

Requirements to acquire a Ph.D. degree

- 1) 30 credits of courses
- 2) Qualifying exam
- 3) Publication of at least one paper in an academic journal
- 4) Presentation of at least one paper in an international conference
- 5) Dissertation

Scholarship

- **Scholarship Period** : 3 years of doctoral program
- **Airfare** (One time only) : Round-trip economy class ticket
- **Monthly Allowance** : 1,100 USD per month
- **Relocation (Settlement) Allowance** : (One time only) 300 USD upon arrival
- **Tuitions** : All tuition fees are waived by the host institution
- **Dissertation Printing Costs** : 400~600 USD, depending on the actual costs

Inquires & Details

- **Department of Agricultural & Resource Economics**
- <http://agecon.kangwon.ac.kr>
- **Department of International Trade**
- <http://itb.kangwon.ac.kr>
- **KNU Notice on HEAT Program**
- <http://www.kangwon.ac.kr/english/selectBbsNttView.do?key=1430&bbsNo=279&nttNo=136313>



Total Number of Grantees

5 faculty members from ASEAN countries
(per year)

Applicant Requirements

- Applicants must 1) hold citizenship in one of the ASEAN countries and 2) currently be a full-time faculty member working at a university in his/her home country.
- Applicants must possess a master's degree or its equivalent as the highest level of educational attainment.
- The applicant should be able to obtain a study leave from his/her university for three years and should return to his/her university upon obtaining a Ph.D. degree at KNU.

Application Timeline

- Document submission Deadline : March 27
- Document Screening : March 30~April 1
 - Notification of eligibility for interview : April 3
 - Interview : April 6~ April 14
 - Selection of 10 candidates and notification to KCUE : April 17
- * KCUE : Korea Center for University Education
- * Schedule is subject to change.



KNU-KOICA SCHOLARSHIP PROGRAM

IN GLOBAL AGRICULTURAL ECONOMICS STUDY

To enhance young leader's comprehensive competency in the areas of agricultural economics therefore to contribute to the ultimate development of developing countries, Kangwon National University provides the master's degree scholarship program specially designed for government officials and professionals from the developing nations.

Program Overview

- **Program Title** : KNU-KOICA Master's Degree Program in Agricultural Economics
- **Stay Duration** : 17 months
- **Degree** : Master of Arts in Economics (Major : Global Agricultural Economics)
- **Accommodation** : Dormitories at Kangwon National University

Application Eligibility

- Be a government employee or researcher in government or government funded research institutes of the KOICA Scholarship target country
- Be an officially nominated by their governments
- Be a graduate who has a Bachelor's degree or an equivalent to college/university
 - Have a good command of both spoken and written English
 - Have not participated in KOICA'S scholarship program or any of the Korean government's Master's degree Scholarship Program before

KNU Mentoring Program

The participants can freely join the mentoring program provided by the scholarship office to provide better opportunities to adapt the university life in Korea.



Korean Culture and Language Study

There are abundant opportunities for the participants to learn Korean language and culture.

The Office of International Affairs of KNU also hosts a variety of cultural programs for students.

Fellowship Event

Beside academic events, the scholarship program also offers monthly fellowship meeting with diverse programs, including culture day, monthly birthday, and New Year's party.

Inquires & Details

The tables and timelines above are tentative thus pleas follow us on

- <http://gaem.kangwon.ac.kr>



ACCOMMODATION (DORMITORY)

KNU has 16 dormitories in three campuses, which can accommodate more than 7,000 students.
All international students can apply for staying at on-campus dormitories.

As of 2019

Location	Dormitory	Room type	Fees (1USD = 1,211won) Approx.	Features
Chuncheon Campus	ToeGyeGwan	Room for 3 people / 380 students (M)	₩430,000 (\$354)	* Dormitory Cafeteria near the buildings
	NanJiWon	Room for 3 people / 366 students (F)		
	GukJiWon			
	YulGokGwan	Room for 2 people / 104 students (M)	₩560,000 (\$462)	* Shared restroom and shower room on each floor
	YeJiWon	Room for 2 people / 579 students (F)	₩480,000 (\$396)	
	DaSanGwan	Room for 2 people / 220 students (M)		
	SaeRomGwan	Room for 2 people / 1,892 students (M), (F)	₩560,000 (\$462)	* Individual bathroom in every room
	YiRoomGwan	Room for 2 people / 1000 students (M), (F)	₩590,000 (\$486)	
		Room for 2 people / 19 students (married couples)	₩1,190,000 (\$981)	* Self-cooking is available
	Global Dormitory 1	Room for 2 people	192 students (M, F)	₩580,000 (\$478)
Room for 4 people		₩500,000 (\$412)		
Family room		₩1,690,000 (\$1,394)		
Global Dormitory 2	Room for 2 people	163 students (M, F)	₩670,000 (\$552)	* Individual bathroom in every room. * Available to use cafeteria in KNU
	Family room			
Samcheok Campus	EonJangGwan	Room for 2 people / 326 students (M)	620,000 Won (\$ 512)	* (Corridor type) 90 people per floor share toilets and shower rooms
	DooTaGwan	Room for 6 people / 330 students (M, F)	740,000 Won (\$ 611)	* (Apartment type) Individual bathroom in every room 6 people shared bathroom
	HaeSolGwan	Room for 2 people / 300 students (M, F)	870,000 Won (\$ 718)	* (One-room type) Individual bathroom in every room 2 people shared bathroom
Dogye Campus	GaOnGwan	Room for 1 person / 4 students (F) (Disabled Room)	880,000 Won (\$ 726)	* (One-room type) Individual bathroom in every room
		Room for 2 people (F)		6 people shared bathroom
	DoWonGwan	Room for 2 people / 8 students (M, F) (Disabled Room)	710,000 Won (\$ 586)	* (Apartment type) Individual bathroom in every room 4 people shared bathroom
		Room for 2 people / 732 students (M, F)		6 people shared bathroom
	Hwang JoGwan	Room for 1 person / 8 students (M, F) (Graduate students)	710,000 Won (\$ 586)	* (Apartment type) Individual bathroom in every room 2 people shared bathroom
		Room for 2 people / 72 students (F)		4 people shared bathroom
Room for 2 people / 504 students (M&F)		6 people shared bathroom		
Private Facilities : Desk, Chair, Bookshelf, Cabinet, Closet, Single Bed, Gas central heating, A/C				
Public Facilities : Cafeteria, Convenience store, Computer room, Laundry room, Study room, Fitness Center, Lounge (TV room), Parcel storage room, Beverage vending machine, Individual room free WiFi available etc.				

Inquires & Details

Chuncheon Campus : <http://knudorm.kangwon.ac.kr/home/foreign>

Samcheok Campus : <http://dormitory.kangwon.ac.kr/>

Dogye Campus : <http://dorm.kangwon.ac.kr/new/main.php>



CAMPUS LIFE



At KNU, there is more to student life than just lectures and tutorials. An abundance of opportunities await international students to become part of the many activities available on campus. There are approximately 6 fields, 87 cultural clubs of 3,864 students (as of September, 2018.) at KNU. If you wish to know Korea and get better acquainted with Korean students, participation in club activities will prove to be extremely rewarding. The OIA (Office of International Affairs) offers many kinds of cross-cultural events and cultural exchange opportunities, which are open to international students, international researchers, their families, and Korean students.



The following activities arranged by the Office of International Affairs for all international students

- Global Festival (Sports Day) in May, International Students' Night in November
"The following events will be arranged by the local government" (Chuncheon city and Gangwon province) every semester, so it is subject to change.
- Kanwon Rice with Seasoned Vegetables Cooking Contest, Chuncheon City Tour, DMZ Tour

87 Students Cultural Clubs

Social Service 14

House repair, Contest, Red Cross, Street cat care, Nursing home service for elderly living alone, Education service for middle and high school students, Rural service, Volunteer, Mentoring service for elementary school students, Youth mentoring, Building service, Scouting

Religion 9

Christianity, Catholicism, Buddhism

Athletics 21

Boarding, Mountain climbing, Haedonggeomdo, Soccer, Snowboarding, Boxing, Basketball, Baseball, Badminton, Korean Gumdo, Aikido, Taekwondo, Baseball, Bicycle, Swimming, Floorball, Yachting, Taekkyon, Tennis, Basketball, Table tennis

Performing Arts 16

Musical instruments, Acoustic guitar, Hip-hop, Creation, Dance, Folk song, Play dramatic arts, Band, Samulnori, Acoustic guitar band, Rock band, Dubbing, Orchestra, voice acting, magic, classical guitar, Festival planning participation

Hobby Exhibition 10

Model production, Travel, Movie critics, Fishing, Companion animals, Photography, Literature, Baduk, Hand painting

Culture / Academy 14

Cultural exploration, Programming, Astronomical observation, Social contribution academic, Computer graphics, English conversation&speech, Lecture, Electronic production, Sign language, Cave research, Start-up, Marketing, Public offering, Computer research, Discussion



about CHUNCHEON

Romantic City, Chuncheon



1 hour from Seoul by public transportation

2009 Seoul - Chuncheon Expressway opened,
2010 Gyeongchun Line Subway opened



Affordable cost of living

Convenient express access, cheap land and logistics cost, abundant water, etc



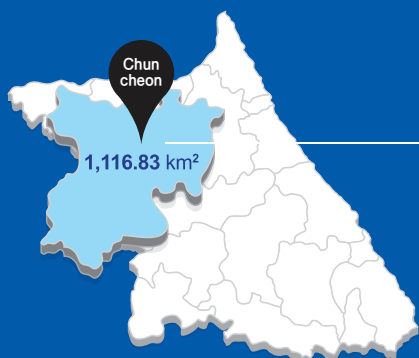
Beautiful natural environment, exciting attractions for tour

No. 1 city that people want to live in Korea,
Kim Yu-jeong Literature Village, Bomnaegil,
Songam-dong Sports Town, etc



Abundant education and culture infrastructure

38,000 students in 6 universities, various cultural festivals such as Mime Festival (selected as the best for 5 years straight), Dakgalbi & Makkuksu Festival, Leisure sports tournament, etc.



Area

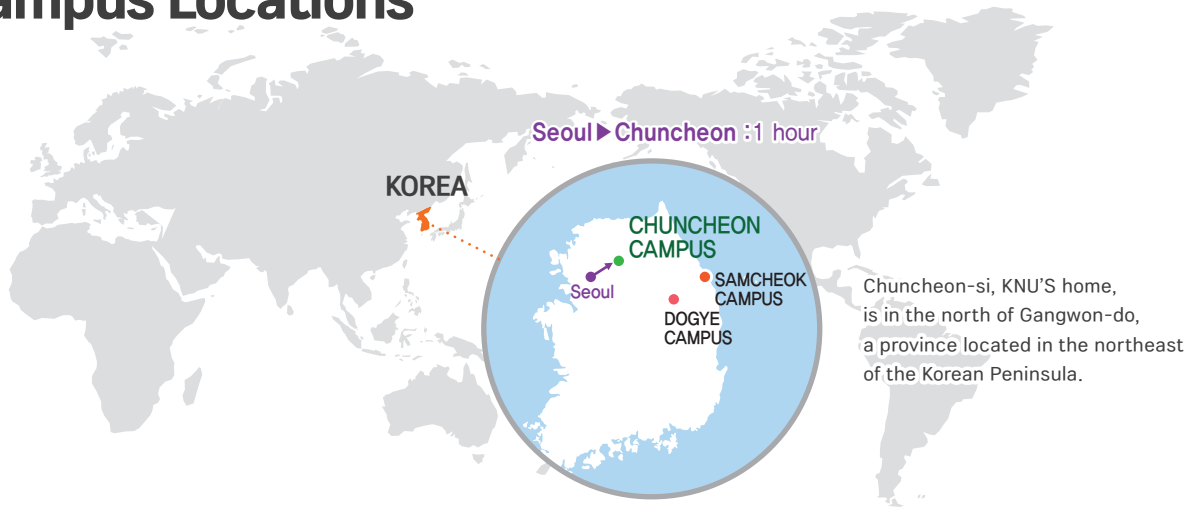
- 1,116.83 km²
(1.8 times of Seoul, 6.6% of the area of Gangwon-do)

Chuncheon Tour Information

<http://romantic.chuncheon.go.kr/portal/index?siteLang=portal>



Campus Locations



CHUNCHEON CAMPUS



SAMCHEOK CAMPUS



DOGYE CAMPUS

Contact

Chuncheon Campus

KNU CHUNCHEON CAMPUS, 1 GANGWONDAEHAKGIL, CHUNCHEON-SI, GANGWON-DO 24341 REPUBLIC OF KOREA

Tel. +82-33-250-6985~9 / +82-33-250-7192~4

Fax. +82-33-259-5522

E-mail. enter@kangwon.ac.kr (Admission Inquiry)
intn@kangwon.ac.kr (Student Exchange)

Website. <http://www.kangwon.ac.kr> (Korean)
<http://www.kangwon.ac.kr/english> (English)
<http://www.kangwon.ac.kr/chinese> (Chinese)

Instagram. [kangwon_national_university](https://www.instagram.com/kangwon_national_university)

Facebook. [KNUKangwonNationalUniversity](https://www.facebook.com/KNUKangwonNationalUniversity)

Samcheok Campus

KNU SAMCHEOK CAMPUS, 346 JUNGANG-RO, SAMCHEOK-SI, GANGWON-DO 25913 REPUBLIC OF KOREA

Dogye Campus

KNU DOGYE CAMPUS, 346 HWANGJO-GIL, DOGYE-EUP, SAMCHEOK-SI, GANGWON-DO 25949 REPUBLIC OF KOREA

Tel. +82-33-570-6891~2

Fax. +82-33-570-6268

E-mail. applyknu@kangwon.ac.kr (Admission Inquiry)
ojh@kangwon.ac.kr (Exchange Inquiry)



KNU
Contact



KNU
Promotional Video



Republic of Korea
KNU International
Kangwon National University

Published in April, 2020