



Southern Federal
University
(SFedU)

**Guide for
incoming
exchange
students**

| Contents



About us	3
Why study at SFedU?	4
Course selection	5

Before arrival

How to apply?.....	7
Academic information	8
<i>(academic calendar, application deadlines, grading system)</i>	
Practical information	9
<i>(accommodation, visa, student support service)</i>	

After arrival

Orientation program.....	12
Practical information	13
<i>(migration registration, national holidays)</i>	
Living in Rostov-on-Don.....	15
Sightseeing in the Rostov area.....	20
Short phrasebook to use while travelling in Russia	22
Contacts	23

About us

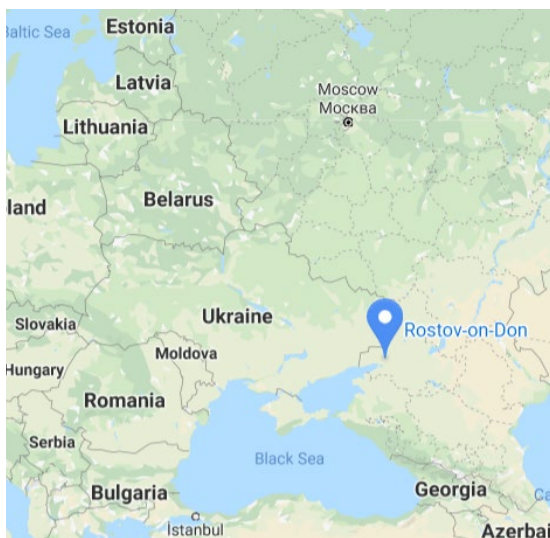
With its origin dating back to 1915, Southern Federal University (SFedU) has evolved into Russia's leading institution of learning, discovery and knowledge creation. Located in the South of Russia, a multi-ethnic region, SFedU is an active partner in national and international educational, scientific and industrial cooperation.

As a leading research university, SFedU offers courses in practically all academic disciplines at both undergraduate and graduate levels and conducts research across the full spectrum of academic activity.

SFedU offers 86 Bachelor's degree programs, 126 Master's degree programs, as well as 26 doctoral programs. The quality of the academic programs is confirmed by German accreditation agencies: ACQUIN and AQAS.

The University campuses:

Rostov-on-Don and Taganrog



Why study at SFedU?

1

Well-established century-old traditions maintained by SFedU

SFedU traces its roots to the Royal University of Warsaw, which relocated to the South of Russia in 1915 during the World War I. Since then the university has gained a strong reputation for the achievements of its faculty and researchers, as well as students and graduates.



2

Great diversity and flexibility of study programs

SFedU provides its potential students with Bachelor, Master, and Doctorate degree programs in a wide variety of fields. We offer our students an innovative curriculum with a broad array of academic disciplines, either singularly or in combination, which enables students to acquire key academic skills.



3

The state-of-the-art research facilities for groundbreaking research

SFedU is proud of its numerous research institutes equipped with cutting-edge facilities. Responding to the challenges of modernity, the scientists of Southern Federal University conduct interdisciplinary research to integrate the scientific achievements into real world economic sectors, providing opportunities for technological breakthroughs. High Scopus citation score bears evidence to the importance of our scientific publications.



4

International outlook and opportunities for young researchers

SFedU is committed to engagement with world-class partner universities worldwide. We foster diversity and international connections in order to enhance our reputation globally. We provide international experience for our students – SFedU promotes the mobility of young researchers across borders and disciplines.



5

Rich and supporting campus environment

SFedU offers its students opportunities to take part in many social, cultural and leisure activities. A comfortable campus environment is equipped with essential extra-curricular facilities, helping students to gain experience in a wide range of areas and meet the demands of modern society.



Course selection

As a leading research institution, SFedU offers course programs at all academic levels and conducts research across a wide spectrum of academic fields. Our high quality research provides students with multi- and inter- disciplinary links and broad knowledge across many disciplines. **The main fields of training are: Natural Sciences and Mathematics, Engineering, Humanities, Architecture and Education Studies.** The main part of the Faculties and Institutes of SFedU are located in the city of Rostov-on-Don, while Engineering courses are mostly conducted at our Taganrog campus.



Structure of SFedU

Rostov Campus

Academy of Architecture and Fine Arts
Academy of Biology and Biotechnologies
Academy of Psychology and Educational Sciences
Academy of Physical Culture and Sport
Higher School of Business
Institute for Advanced Technologies and Piezotechnics
Institute of History and International Relations
Institute for Mathematics, Mechanics, and Computer Science n.a. I.I. Vorovich
Institute for Earth Sciences
Institute for Sociology and Regional Studies
Institute of Philology, Journalism and Intercultural Communications
Institute of Philosophy and Social and Political Studies
Faculty of Management
Faculty of Physics
Faculty of Chemistry
Faculty of Economics
Faculty of Law
The Smart Materials Research Institute
Research Institute of Physics
Research-scientific Institute of Physical & Organic Chemistry

Taganrog Campus

Institutes of Academy for Engineering and Technologies:
Institute of Radio Engineering Systems and Control
Institute of Computer Technologies and Information Security
Institute of Management in Economic, Ecological and Social Systems
Institute of Nanotechnologies, Electronics and Equipment Engineering
Research Institute of Multiprocessor Computation Systems n.a. A.V. Kalyaev
Research Institute of Robot Engineering and Control

Course offer for incoming students



Despite the fact that the official language of instruction at SFedU is Russian, we provide exchange students with a wide variety of both undergraduate and graduate courses delivered in English.

The full list of English-taught courses is published on the university's website: https://sfedu.ru/www/stat_pages22.show?p=INR/N12344/P

You can take courses from different faculties as long as they meet the requirements of the study program at your Home University.

Intensive Russian language course

All incoming students can enrol in a free Russian language course (5 ECTS) in order to learn more about Russian culture and people, get acquainted with the rich Russian literature, and be able to communicate locally and meet new friends. The language group enrolment will be tailored to the level of your Russian language skills.

Foreign language courses

Studying another language could widen your career options and deepen your understanding of other cultures. At Southern Federal University, all incoming students have an opportunity to enrol in foreign language courses, such as Russian, English, German, French, Spanish, Chinese, etc.



Before arrival

How to apply? Step-by-step application process

- Step 1** If you wish to study at Southern Federal University for one or two semesters, you have to check with your Home University if there is a valid agreement between our institutions.
- Step 2** To become an exchange student at SFedU you firstly must be nominated by your Home University. It is the responsibility of the International Office of your Home University to send your nomination to SFedU by e-mail. Please make sure that the nomination is sent to the following **e-mail address: nklyuchko@sfedu.ru**.
- Step 3** Selection of courses. The catalogue of courses in English can be viewed here: **https://www.sfedu.ru/www/stat_pages22.show?p=INR/N12344/P**. The catalogue offers course descriptions and provides details on required readings or course materials. The amount of ECTS points for a course is also usually published in the course catalogue. We have no required number of credits to obtain, but students at SFedU normally complete 30 ECTS credit units per semester.
- Step 4** Fill out the **Application Form**, indicating the list of selected courses and send it with a scanned-copy of your passport attached to the following **e-mail address: nklyuchko@sfedu.ru**. A certificate proving that your English language proficiency is at least at B1 level is also recommended.
- Step 5** Once the list of selected courses has been agreed upon, get your Learning Agreement signed by all three parties.
- Step 6** Once you successfully submit the application documents, the SFedU International Office will send you an official invitation which is required to obtain a Russian visa at the Russian Consulate in your home country. It will take approximately a month to process the invitation.



Before arrival make sure you have assembled all the necessary documents (prepared in English or in Russian):

- > **certificate** proving your student status at your home university
- > **6 photos (3 x 4)**
- > student **visa**
- > **4 copies** of your **passport**
- > **medical** certificates
- > **health insurance** valid for the whole period of stay in Russia

Contact Person for Incoming Exchange Students

If you have any questions, do not hesitate to ask me:

Nadia Klyuchko

e-mail: nklyuchko@sfedu.ru

phone: +7 863 218 40 57

Before arrival

Academic Information

1 Application Deadlines	> AUTUMN SEMESTER	> SPRING SEMESTER
	APPLICATION DEADLINES	JUNE, 15

2 Academic Calendar

> AUTUMN SEMESTER		> SPRING SEMESTER	
SEPTEMBER-DECEMBER	LECTURE PERIOD	FEBRUARY-MAY	LECTURE PERIOD
JANUARY 1-JANUARY 10	NEW YEAR BREAK	JUNE	EXAMS
JANUARY 10-LATE JANUARY	EXAMS	JULY-AUGUST	SUMMER BREAK

3 Grading system

Grading system in use at Southern Federal University

RUSSIAN GRADING SYSTEM	ECTS
5 = EXCELLENT	A
4 = GOOD	B
3 = SATISFACTORY	C
2 = FAILED	F (FAILED OR DISCONTINUED COURSES DO NOT APPEAR IN THE TRANSCRIPT)

* ECTS (European Credit Transfer System) is used at SFedU; 1 ECTS credit represents the workload of 36 working hours including lessons, assignments, exams and homework. It is possible to study approximately 30 ECTS credits per one semester. Course catalogue with further information: https://www.sfedu.ru/www/stat_pages22.show?p=INR/N12344/P

Before arrival

Practical Information Accommodation for exchange students

SFedU Student Halls of Residence



Modern Sports Complex



Southern Federal University provides all international students with comfortable living conditions in new apartment-type dormitories. Student Halls of Residence in Rostov-on-Don are multistory buildings with one- and two-room apartments. Rooms are mainly intended for two people, each apartment has own kitchen and bathroom facilities. There is a modern sports complex on the campus's territory, which makes it possible for students to engage in sports such as tennis, volleyball, basketball, football and other sports.

On the ground floor of SFedU dormitories, there is a student cafeteria, a self-service laundry, a gym, a medical centre and a library. Next to the dormitories, there is a sport complex with a 50-meter Olympic-sized swimming pool.

For more information, click here:

http://welcome.sfedu.ru/sfedu-hostel_en.html



Olympic-sized swimming pool



SFedU cafe

Living expenses

> ROOM IN A SHARED FLAT

> ROOM IN THE STUDENT HALLS OF RESIDENCE

HOUSING	15 000 - 25 000 RUB / MONTH	≈ 1800 RUB / MONTH
FOOD (CONSUMER BASKET)	12 000 RUB / MONTH	12 000 RUB / MONTH
TRANSPORT	1200 - 2500 RUB / MONTH	1200 - 2500 RUB / MONTH
LEISURE	10 000 - 15 000 RUB / MONTH	10 000 - 15 000 RUB / MONTH
TOTAL	≈ 54 500 RUB / MONTH	≈ 31 300 RUB / MONTH

> Visa information

Student visas are compulsory to study at Southern Federal University and can be obtained through the Russian Embassy (Consular Department) or Russian Consulate in your country of residence. To apply for a visa it is required to present the official invitation from SFedU which you will receive via e-mail within 4-5 weeks after you submit the application documents.

Initially, a student visa is issued for three months. However, after arrival you can apply for a visa extension at the Migration Office of SFedU. The Migration Office issues a multi-entry visa which allows you to travel across and outside Russia within the validity period of the visa. The validity period of your visa corresponds to the duration of your academic program.



Southern Federal University provides its exchange students with support services such as:

1

Free airport pick-up service

Arriving in a new country and then finding the way to your accommodation can be stressful. That is why we offer a free pick-up service from the airport to all exchange students. Please forward your flight details to the following **e-mail address (nklyuchko@sfedu.ru)** a minimum of 10 days in advance before arrival.

2

Buddy program

During your exchange period you will have a buddy-student, always ready to give you a hand. Your buddy-student will provide assistance during the dormitory check-in and registration process at the SFedU Migration Office. The buddy-student also will help you to integrate into the social community and get acquainted with the campus environment.

3

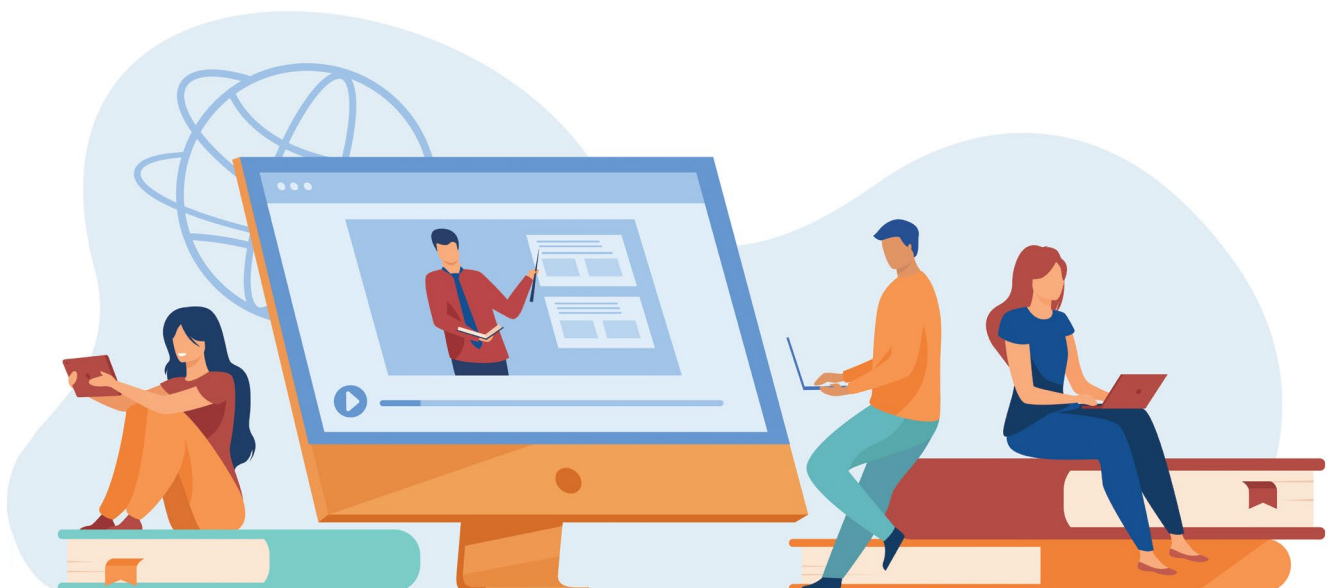
Departmental coordinators

Departmental exchange coordinators arrange the timetable for international students and keep in touch with them on all academic matters.

4

Orientation program

Orientation program is designed to provide you with essential and useful information to help you settle into University life. This is a great way to make new friends and meet the staff who will support you while you are studying at SFedU. Aside from essential administrative procedures, leisure and cultural activities will be organized in order to brighten up your stay.



Day 1-2

ARRIVAL DAYS

It is high time to arrive at Southern Federal University! Free pick-ups from 'PLATOV' airport are available. Meet your buddy-student & receive your welcome package (accommodation check-in, registration at the migration office, getting a local bank account & sim card, student halls of residence tour, etc).

Day 3-4

INTRODUCTION DAYS

Introduction to our student life support services. Meet your departmental coordinator & set up your schedule. Join SFedU campus tour. Race around campus to discover important places.

Day 5-6

EXCURSION DAYS

Short tours around the highlights of the Rostov region to give you an overview of Russian history and local traditions.



Practical information

Migration registration

As soon as you arrive at the University you should immediately (within 3 working days) submit the documents for migration registration to the SFedU Migration Office.

Documents required for migration registration:

- › **4 copies of your passport** (all pages except blank ones);
- › **4 copies of your migration card** (given by border control officers, filled in and signed by the passenger);
- › **6 photos sized 3x4**;
- › **health insurance valid** for the whole period of stay in Russia.

After the registration has been received and processed, you can stay in the Russian Federation as long as your entry visa is valid. If you would like to travel to other Russian cities,



please visit the Migration Office (Str. Zorge, 9b, office 138, Rostov-on-Don) a minimum of 7 working days in advance of departure.

Please bear in mind that a Russian student visa is originally intended for 3 months but can be extended in accordance with your academic program. The application for the visa extension must be submitted no later than 45 days before the expiry date.



Contact Person for International Students

SFedU Migration Office

E-mail: sakuzovova@sfedu.ru

Phone: +7 (863) 218 40 00 Ext. 15-119

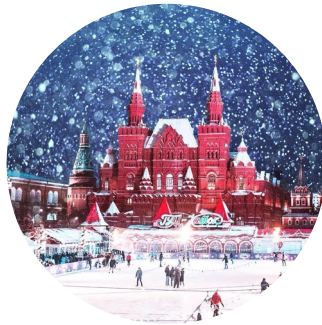
Working hours: Monday to Friday, 9 am to 5 pm

Address: Str. Zorge, 9b, office 138, Rostov-on-Don, 344090, Russia

National Holidays



JANUARY 1
New Year's Day



JANUARY 1-8
New Year Holidays



JANUARY 7
Orthodox Christmas Day



FEBRUARY 23
Defender of the Fatherland
Day



MARCH 8
International Women's
Day



MAY 1
Spring and Labour
Day



MAY 9
Victory Day



JUNE 12
Russia National Day



NOVEMBER 4
Day of Unity

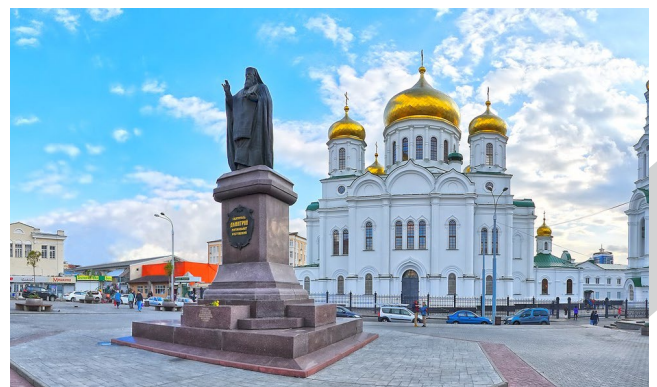
| Living in Rostov-on-Don



Rostov-on-Don (founded in 1749) is the largest city in the South of Russia with a population of more than 1 million people

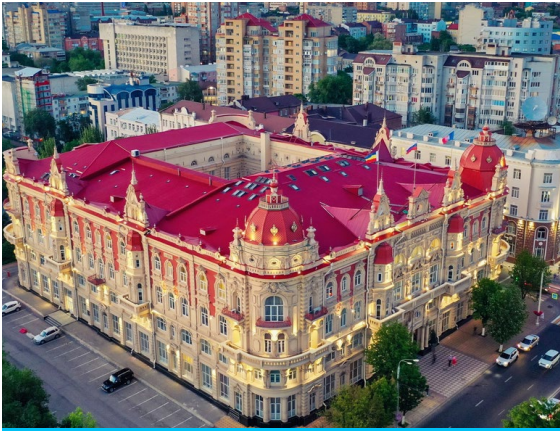
- the capital of the Rostov region and the Southern Federal District
- the major administrative, cultural, scientific, and industrial centre of southern Russia
- 46 km from the Azov Sea
- one of the richest historical and cultural destinations
- a home to more than 1,000 objects of cultural heritage

Rostov-on-Don is a vibrant, multicultural city with a great choice of social activities, entertainment, and culinary heritage. Situated on the right bank of the river Don, the city offers a unique atmosphere of Cossack culture and lifestyle, featuring a range of impressive architectural highlights and beautiful landscapes.

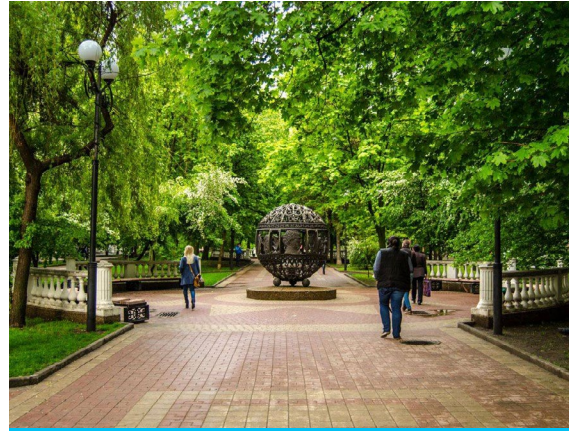


| Leisure

› Main downtown streets



Bolshaya Sadovaya Street



Pushkinskaya Street

› Theatres

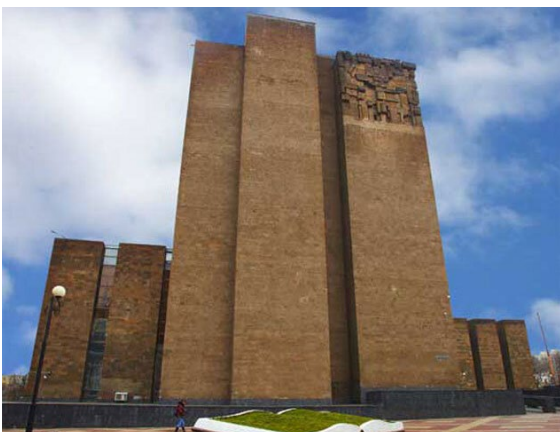


Rostov State Musical Theatre

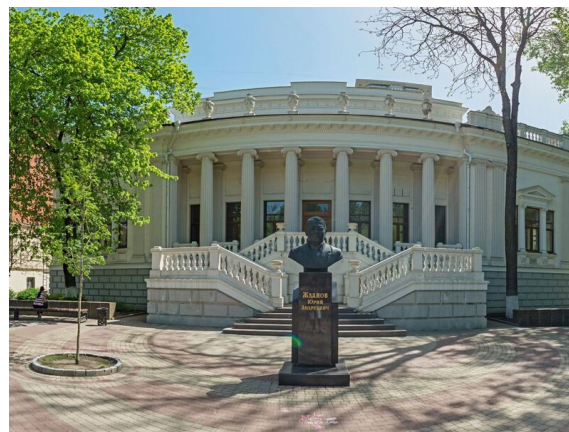


Rostov Academic Drama Theatre
n.a. Gorky

› Libraries

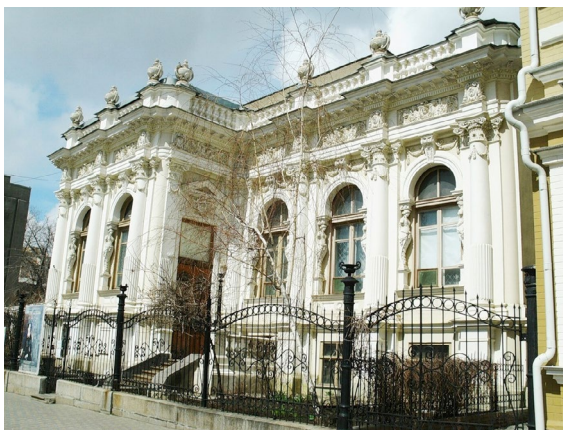


Don State Public Library

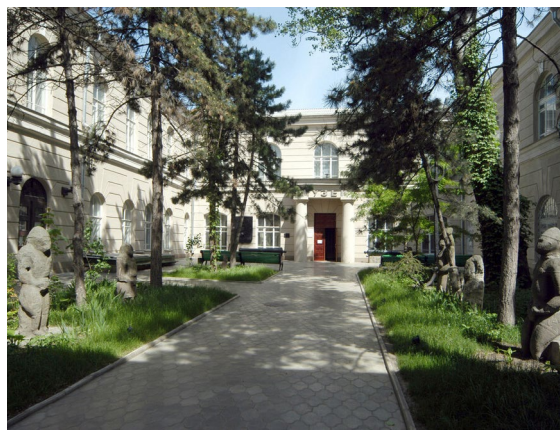


Regional scientific library of SFedU
n.a. Zhdanov

› Museums



Regional Museum of Fine Arts



Rostov Museum of Local Lore

› Parks

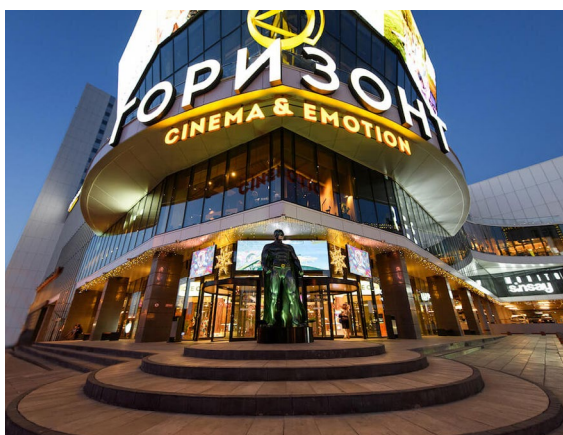


Gorky Central Park



October Revolution Park

› Cinemas



"Cinema & Emotion" at Gorizont Mall



Cinema Centre "Bolshoy"

› Café chains



Cofeeman



Pit' Kofe



Shtefan Burger



Osaka



› Other places of interest to visit



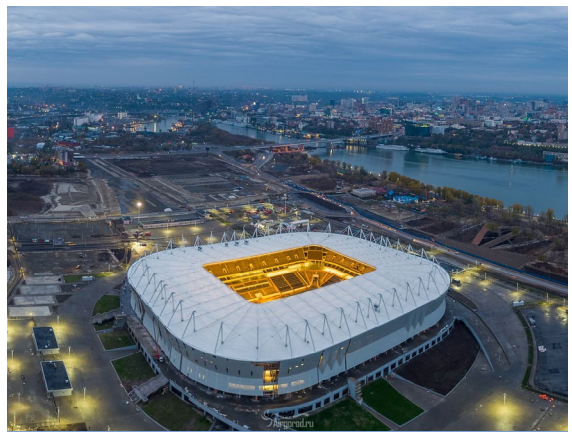
Don Embankment



Rostov State Circus



Rostov Zoo



Rostov Arena



H2O Waterpark



Rostov Dolphinarium

For more information about tourist attractions in Rostov-on-Don, click here:
<https://tourism.rostov-gorod.ru/en/attractions/>

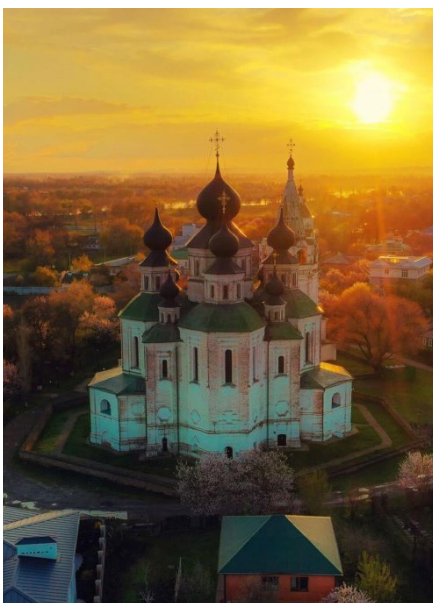
| Sightseeing in the Rostov area

› The city of Taganrog



Taganrog is the second largest city in the Rostov region. It was founded in 1698 by Peter the Great on the coast of the Azov Sea in the mouth of the river Don. Taganrog is the birthplace of Anton Chekhov, the celebrated Russian dramatist and writer. Numerous museums, historical monuments, public parks and gardens, beaches and fresh air create a wonderful atmosphere for work and leisure.

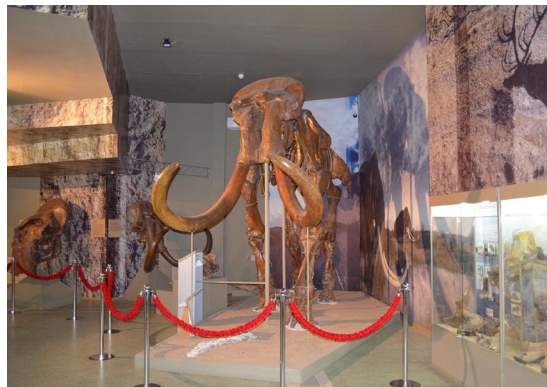
› Stanitsa Starocherkasskaya



Starocherkasskaya is a rural locality (a stanitsa) in Rostov Oblast with origins dating from the late 16th century. It is famous for having been the centre of Don Cossack culture for nearly two centuries. Now it is considered as one of the major cultural heritages in the Rostov region with historically significant sites and beautiful suburban landscapes.

› Azov

Azov is a town further afield in the Rostov region, mostly famous for the Azov Museum-Reserve that is one of the largest museums in the South of Russia. It contains more than 400 thousand exhibits, the earliest of which is about 250 million years old. A huge archaeological collection represents the culture of numerous peoples who inhabited the Don region at different times.



› The ancient city of Tanais

Tanais was an ancient city founded in early 3rd century BC by Greek colonists. The city of Tanais has played a significant role in the political life of the Northern Black Sea Region for almost eight centuries. The Tanais Archaeological Reserve Museum is one of the largest historical and archaeological open-air reserve museums in Russia. The museum currently numbers more than 140 thousand artifacts in addition to the unique amphora hall.



Short phrasebook to use while travelling in Russia

**START
LEARNIG
RUSSIAN
TODAY!**

Hello

Hi

Good morning

Good afternoon

Good evening

Goodnight

Goodbye

It is nice to meet you

My name is ...

What is your name?

How are you?

I am fine

Where are you from?

I am from ...

I see

I don't understand

I don't know

Can you repeat please?

Thank you

Sorry

You are welcome

Please

Okay / alright

How can I get to ...?

What is this?

How much does it cost?

It's expensive

It's cheap

Can I pay by credit card?

Can I pay in cash?

May I have the bill, please?

I am a student

I am a student of Southern
Federal University

I am learning Russian

I live in Rostov-on-Don /
Taganrog

I am studying at the Faculty of...

I love SFedU

Здравствуйте

Привет

Доброе утро

Добрый день

Добрый вечер

Спокойной ночи

До свидания

Приятно познакомиться

Меня зовут

Как тебя зовут?

Как дела?

У меня все в порядке

Откуда ты?

Я из

Понятно

Я не понимаю

Я не знаю

Повторите, пожалуйста

Спасибо

Простите

Не за что

Пожалуйста

Хорошо

Как мне добраться /доехать
до ...?

Что это?

Сколько это стоит?

Это дорого

Это дешево

Могу я оплатить картой?

Могу я оплатить наличными?

Можно счет, пожалуйста?

Я студент

Я студент Южного
федерального
университета

Я изучаю русский язык

Я живу в Ростове-на-Дону /
Таганроге

Я учусь на факультете ...

Я люблю ЮФУ

Zdravstvuyte

Privet

Dobroye utro

Dobryy den'

Dobryy vecher

Spokoynoy nochi

Do svidaniya

Priyatno poznakomit'sya

Menya zovut ...

Kak tebya zovut?

Kak dela?

U menya vse v poryadke

Otkuda ti?

Ya iz ...

Ponyatno

Ya ne ponimayu

Ya ne znayu

Povtorite, pozhaluysta

Spasibo

Prostite

Ne za shto

Pozhaluysta

Khorosho

Kak mne dobrat'sya /doyekhat'
do ...?

Shto eto?

Skol'ko eto stoit?

Eto dorogo

Eto deshevo

Mogu ya oplatit' kartoy?

Mogu ya oplatit' nalichnymi?

Mozhno schet, pozhaluysta?

Ya student

Ya student Yuzhnogo feder-
al'nogo universiteta

Ya izuchayu russskiy yazyk

Ya zhivu v Rostove-na-Donu /
Taganroge

Ya uchus' na fakul'tete ...

Ya lyublyu YUFU

| Contacts

SFedU address: 105/42 Bolshaya Sadovaya Str.,
Rostov-on-Don, 344006, Russia

Centre of International Programs and Projects

Director: Alla Batchenko

Tel./fax: +7 (863) 218 40 57

E-mail: allabat@sfedu.ru

Exchange programme coordinator:

Nadia Klyuchko

Tel./fax: +7 (863) 218 40 57 Ext. 10-611

E-mail: nklyuchko@sfedu.ru

Visa invitations for incoming students:

Tatyana Bilibina

Tel./fax: +7 (863) 218 40 24 Ext. 10-613

E-mail: bilibina@sfedu.ru

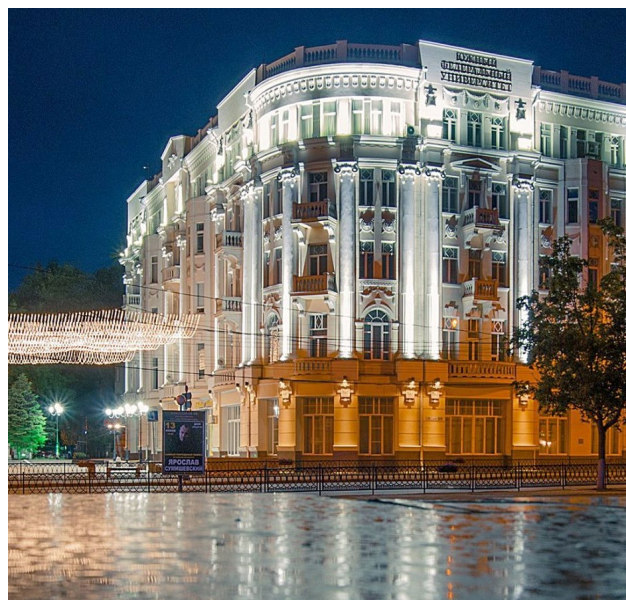
SFedU Migration Office

Contact person: Svetlana Kuzovova

Tel./fax: +7 (863) 218 40 00 Ext. 15-119

Office 138, Student Halls of Residence,
building 9b

E-mail: sakuzovova@sfedu.ru



ICE number

In case of emergency please call No 112.
1-1-2 is a common emergency telephone
number that can be dialed free of charge
in order to reach emergency services (am-
bulance, fire and rescue, police).

FOLLOW US ON SOCIAL MEDIA!



<https://www.facebook.com/groups/sfedu/>



[sfedu.ru](https://www.instagram.com/sfedu.ru)



https://twitter.com/sfedu_official



<https://www.youtube.com/user/sfeduTV>

