



강원대학교 춘천 캠퍼스 - 교환학생 프로그램

Student Exchange Program of KNU (Chuncheon Campus)

江原大学 春川校区 - 交换生项目

OIA

Office of International Affairs

Ms. Jinny Jang (장진희)

Program Coordinator for Non-Asian section

intn@kangwon.ac.kr

82-33-250-6989

Ms. Chloe Yoon (윤자영)

Program Coordinator for Asian section

intnknu@kangwon.ac.kr

82-33-250-6979

Ms. Da hae Jung (정다혜 郑多惠)

负责中国交换生的老师 (China)

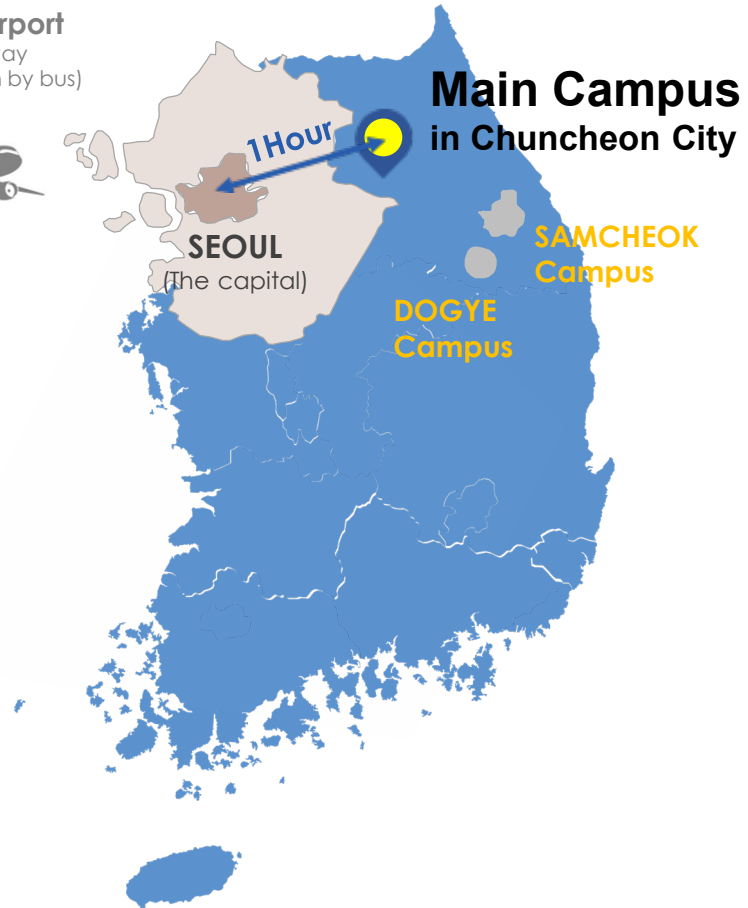
intnknu@kangwon.ac.kr

82-33-250-7193



International Affairs, 1 Kangwondaehak-gil, Chuncheon-si, Gangwon-do, Republic of Korea (Zip code : 24341)

Incheon Airport
(2h 30m away
from Chuncheon by bus)



At a Glance



- One of 10 core National Universities in South Korea, representing Gangwon-province
- Comprehensive university with 76 years of history since 1947
- One hour from the capital city Seoul by bus or subway
- 2020 QS Asian University Ranking #215
- 23,000 students, 1,900 professors, and staff

3

Campuses

17

Colleges (113 majors)

10

Graduate Schools

49

Research Institutes

28,974

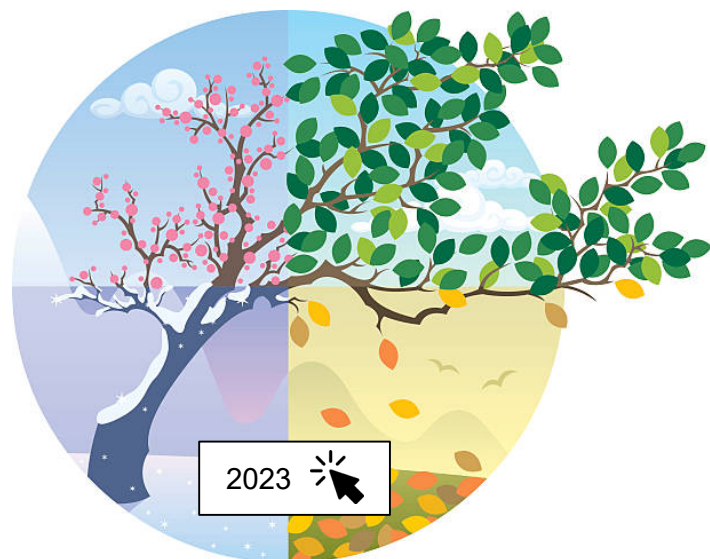
Students

1,875

Faculty Members



Nomination and Application process



Academic Calendar

- [Spring Semester] Early March - Mid June
- [Summer Break] Late June - Late August
- [Fall Semester] Early September - Late December
- [Winter Break] Late December - Late February



Deadlines

• Nomination by Staff

[Spring Semester] October 20

[Fall Semester] April 20



Nomination Form

• Applicant's Online Application

[Spring Semester] November 10

[Fall Semester] May 10

Eligibility



- Qualification of understanding classes in Korean or English
- Student who completed at least 2 semesters at home university
 - GPA 2.7 out of a 4.0 scale or above (or 3.0 out of 4.5)



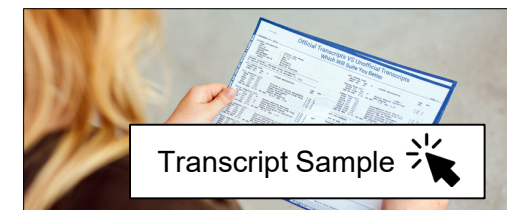
Study Period

- One or two semesters

Tuition Waiver



Transcript



- KNU will email every student's transcript (English version) to the partner universities without a student's request. It will be in mid-July for the Spring semester and in mid-January for the Fall semester.

Academic Information



12 Colleges with 90+ programs

- Business Administration
- Agriculture and Life Sciences
- Art and Culture
- Social Sciences
- Biomedical Science
- Natural Sciences
- Art, Culture, and Engineering
- Animal Life Sciences
- Education
- Forest and Environmental Sciences
- Humanity College
- Information Technology(IT)

< Limited study Fields >

Nursing, Medicine, Veterinary Science (Medicine), Pharmacy, Law



Courses taught in English and Korean

- You can check each semester's course list.
 - If you are planning to study at KNU in Fall, you can refer to the list of the most recent Fall semester's courses.
- The list of courses for a new semester is updated in early February for Spring and in early August for Fall.



Recommended Courses

- We grantee 4-5 courses taught in English every semester, which are related to Korea such as Korean history, language, K-culture etc.

Required Documents

Students can access the application link through an e-mail only after they were nominated by their home university.

Documents for Online Application



✗ All documents should be prepared in English or Korean and uploaded when an applicant does an online application

1) **Certificate of Enrollment** [재학증명서] * Must be certified by APOSTILLE or embassy in your country

2) **Transcript of Records** [성적증명서]

3) **Recommendation letter from Home University** [추천서]

4) **Copy of Passport** [여권 사본]

5) **Proof of Financial Ability – Bank Statement Certificate** [재정증명서]

(Optional) Korean or English Language Proficiency Certificates [한국어 TOPIK 또는 영어 어학증명서]



After admitted by the applicant's desired department

- Flight e-tickets, Medical check-list with the TB test result, Dormitory application
- KNU OIA will require to upload the documents on the KNU online system after applicants receive an admission letter from KNU.



Friendly Support Programs



Airport Pick-up Service

- On a predetermined date, we offer a free airport pickup service for exchange students arriving in Chuncheon.
- A KNU bus from Incheon Airport Terminal 1 drops off students at the dormitory of KNU once in the morning and in the afternoon.



Buddy Program

- KNU students (BUDDY) are assigned to assist all exchange students as they adjust to college life and Korean culture.
- All exchange students will be given Korean friends without the need for a separate application, and students can create lasting memories by assisting them with their studies and participating in various cultural activities.



Various Activities

- Orientation
- 1st Day at KNU for Exchange Students
- Wearing Han-bok (Korean traditional clothes)
- Chuncheon City Tour
- KNU Festival 'Dae-dong-je'
- International Food Experience
- Flea Market
- Two types (No credit / 3 Credits) of Free Korean Language Classes
- Farewell Meeting for Exchange Students

Living in South Korea



Accommodation and Meals

- We offer exchange students two different types of lodging (2 or 3 people rooms). There is no assurance that all students will be assigned to their preferred lodging due to the limited number of rooms available. (No kitchen facilities)
- During the first semester ONLY, the Office of International Affairs processes a new student's dormitory application. Therefore, when they begin their studies at KNU, newly admitted students shouldn't worry about the dormitory application.
- Although dorms lack kitchens, there are plenty of cafes and cafeterias on campus as well as restaurants off campus that are open to students. Campus cafeterias require students to purchase a meal ticket for each visit.



Cost of Living


- Housing Fees of Dormitory (as of 2023)
 - One semester (for 4 months): \$600-\$700
 - Vacation (for 2 months): \$350-\$500


• Eating Out Costs


- Meal ticket(on campus): \$4-\$6
- Korean / International food (off campus): \$6-\$13
- Hamburger meals: \$5-\$8
- Cafe Drinks: \$2-\$4


- Health Insurance Premiums : \$50 each month
- Transportation Costs
 - Taxi fare in Chuncheon city : \$3-\$5
 - Bus or ITX train fare : \$7-\$9 (from Chuncheon to Seoul)



KNU Website (English) 

강원대 홈페이지 (Korean) 

江原大 官网 (Chinese) 

 **Korean Language Program**
(Non-credit course in charge)

