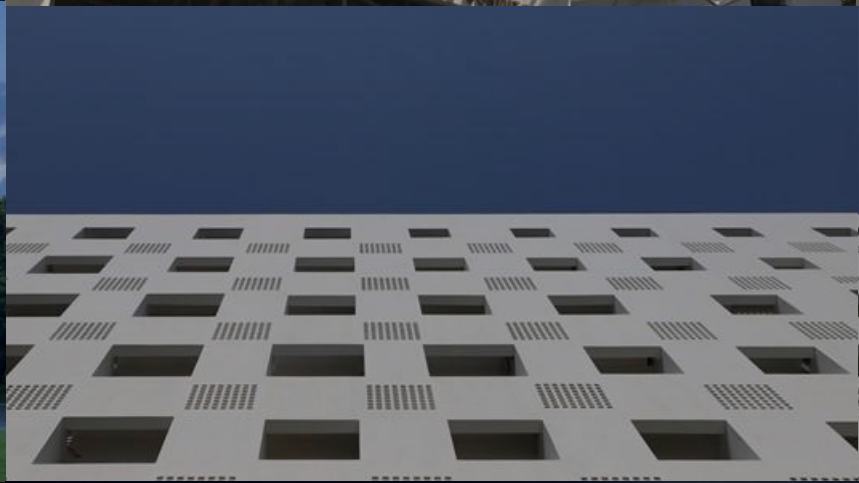




SHENZHEN UNIVERSITY

Exchange Program for Inbound Students

Updated on September 28th, 2020

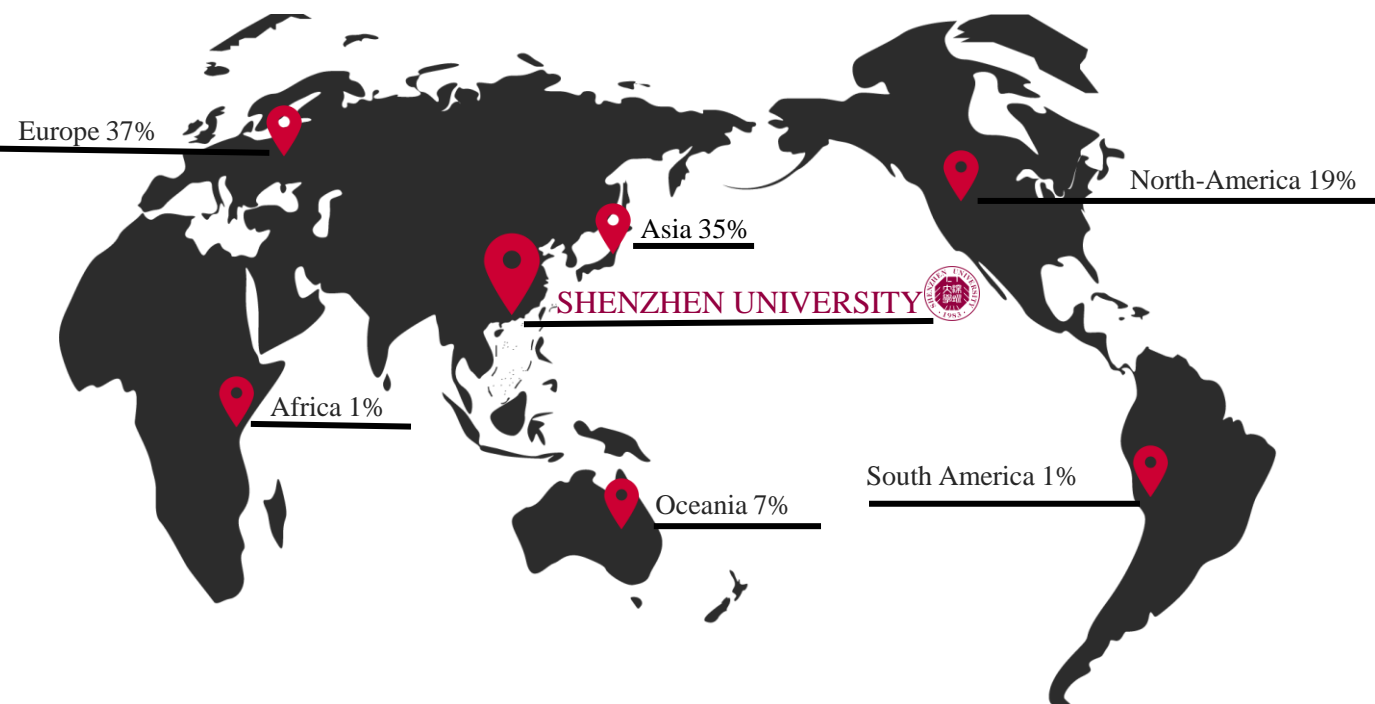


About SZU

- **Faculty members 3920**
Full time students 39254
4 campus (Yuehai / canghai / lihu / luohu)
- **2020 U.S. News best global universities rankings**
32th in china
427th in the world
Updated in October 2020
- **2020 academic ranking of world universities**
31th in China
263th in the world
Updated in August, 2020
- **Times higher education world university ranking 2020**
16th in China
401th-500th in the world
Updated in September 2020
- **QS world University ranking 2020**
33th in china
601-650th in the world
Updated in June 2020



International cooperation



308 partner universities and research institutions in 50 countries

Asia

Hong Kong (China)	6
Macao (China)	4
Taiwan (China)	23
Japan	19
South Korea	27
Philippines	1
Thailand	1
Jordan	1
Kazakhstan	2
India	5
Malaysia	4
Singapore	3
Israel	1
Vietnam	1
Cambodia	1
Pakistan	6
Turkey	2

North America

USA	49
Canada	5
Cuba	2
Mexico	1

South America

Argentina	1
Peru	1
Brazil	1

Europe

UK	30
Ireland	3
France	15
Spain	7
Portugal	1
Slovak	1
Russia	9
Italy	7
Austria	2
Bulgaria	1
Finland	3
Germany	7
Sweden	1
Switzerland	2
Belgium	4
The Netherlands	6
Poland	3
Lithuania	3
Serbia	2
Hungary	1

Ukraine	2
Romania	1
Latvia	1
Norway	2
Cyprus	1
Montenegro	1

Oceania

Australia	18
New Zealand	4

Africa

Egypt	3
-------	---



Study in

Shenzhen University

Chinese Language courses



深圳大学
SHENZHEN UNIVERSITY

Course Levels	Course Name	Credit
Beginner-A	Comprehensive A	10
	Listening and Speaking A	10
Beginner-B	Comprehensive B	8
	Speaking B	8
	Listening B	4
Elementary A	Elementary Comprehensive Chinese (Level 2)	8
	Elementary Oral Chinese (Level 2)	8
	Elementary Chinese Listening (Level 2)	4
Elementary B	Elementary Comprehensive Chinese (Level 3)	8
	Elementary Oral Chinese (Level 3)	8
	Elementary Chinese Listening (Level 3)	4

Course Levels	Course Name	Credit
Intermediate Class A	Intermediate Comprehensive Chinese (Level 1)	8
	Intermediate Chinese Reading and Writing (Level 1)	6
	Intermediate Chinese Listening and Speaking (Level 1)	6
Intermediate Class B	Intermediate Comprehensive Chinese (Level 2)	8
	Intermediate Chinese Reading and Writing (Level 2)	6
	Intermediate Chinese Listening and Speaking (Level 2)	6
Advanced Class	Advanced Comprehensive Chinese (1)	8
	Advanced Chinese Speaking (1)	6
	Advanced Chinese Writing (1)	2
	Introduction to Chinese Culture	4



深圳大學

SHENZHEN UNIVERSITY

College	Program
School of Humanities	Philosophy
	History
	Chinese Language and Literature (teacher training program)
	Chinese Language and Literature
School of Foreign Languages	English
	English(teacher training program)
	French
	Japanese
	Spanish
School of Media and Communication	German Journalism
	Advertising
	Internet & New Media
Division of Arts	Art Design
	Visual Communication Design
	Environmental Design
	Product Design
	Fashion Design
	Fine Arts
	Performance
	Vocal Performance
	Broadcasting
	Choreography
	Digital Media Arts
Musical Performance	

College	Program
College of Economics	Economics
	Finance
	International Trade and Economics
	Accounting
	Logistics Management
College of Management	Business Management
	Marketing
	Human Resource Management
	Administrative management
	E-Commerce
	Information Management and Information System
	Science of Law
Law school	Sociology
College of Mathematics and Statistics	Mathematics and Applied Mathematics
	Mathematics and Applied Mathematics(teacher training program)
	Information and Computing Science
	Statistics
	Physics
College of Physics and Optoelectronic Engineering	Physics(teacher training program)
	Nuclear Engineering and Nuclear Technology
	Measurement and Control Technology and Instrument
	Photoelectric Information Science and Engineering
	Chemistry
College of Chemistry and Environmental Engineering	Chemistry(teacher training program)
	Environmental Engineering
	Food Science and Engineering
	New Energy Science and Engineering

College	Program
College of Civil and Transportation Engineering	Civil Engineering
	Transportation Engineering
	Construction Management
College of Materials Science and Engineering	Materials Science and Engineering
	Polymer Materials and Engineering
Normal College (Faculty of Education)	Psychology
	Psychology(teacher training program)
	Leisure Sports (Golf)
	Educational technology
	Preschool Education
	Sports Training
	Physical Education
Leisure Sports (Leisure tourism)	
College of Computer Science & Software Engineering	TCSOL (Teaching Chinese to Speakers of Other Languages)
	Computer Science and Technology
	Software Engineering(Coporate with Tecent)
College of Mechatronics and Control Engineering	Software Engineering
	Mechanical Design Manufacture and Automation
	Automation
	Robot Engineering

College	Program
Health Science Center	Biomedical Engineering
	Clinical Medicine
	Pharmaceutical Sciences
	Dental Medical nursing
College of Life Sciences and Oceanography	Preventive Medicine
	Biotechnology
	Marine Sciences
	Biological Education
School of Architecture and Urban Planning	Biological Sciences
	Biological Sciences(teacher training program)
	Architecture
	UrbanandRuralPlanning Landscape
College of Electronics and Information	Geospatial Information Engineering
	Electronic Science and Technology
Institute for Advanced Study	Microelectronics Science and Engineering
	Innovation Class in Science and Engineering(ICSE)
Shenzhen University Webank Institute Of Fintech	finance
	computer science

Undergraduate Courses

College	Subject
Law School	Law
	Science of Law
	Social Work
College of Management	Business Management
	Public Management
	Politics
	Management Science and Engineering;
College of Economics	Statistics
	Applied Statistics
	International Business
	Accounting
	Theoretical Economics
College of Materials Science and Engineering	Applied Economics
	Materials and Chemical Engineering
	Materials Science and Engineering
School of Media and Communication	Journalism & Communication
	Journalism and Communication Studies
College of Electronics and Information	Electronic and Information
	Electronics Science and Technology;
	Information and Communication Engineering
College of Chemistry and Environmental Engineering	Materials and Chemical Engineering
	Chemistry
College of Mechatronics and Control Engineering	Electronic Information
	Mechanic
	Mechanical Engineering
	Control Science and Engineering
College of Computer Science & Software Engineering	Electronic Information
	Computer Science and Technology
School of Architecture and Urban Planning	Architecture
	Urban & Rural Planning
	Geographic information and smart city
College of Mathematics and Statistics	Applied Statistics
	Statistics
	Mathematics

College	Subject
College of Civil and Transportation Engineering	Civil Engineering and Water Resources
	Communications and Transportation
	Civil Engineering
	Management Science and Engineering;
College of Physics and Optoelectronic Engineering	Electronic and Information
	Mechanic
	Physics
Health Science Center	Optical engineering
	Clinical Medicine
	Pharmacy
	Biomedical Engineering;
	Electronic Information
Division of Arts	Basic Medical science
	Art & Design
	Artistic Theory
	Music and dance
	Drama, Cinema and Television
	Fine Arts
School of Applied Technology	Design
	Electronic and Information
	Mechanic
	Material Science and Engineering
	Communications and Transportation
	Physics
	Mechanical Engineering
	Optical engineering
	Computer Science and Technology
	Biomedical Engineering
Institute for Advanced Study	Complex system and data science
	Life health and environment
	Material Science and Engineering
School of Humanities	Philosophy
College of Life Sciences and Oceanography	Chinese Language and Literature
	Biology;
	Ecology

College	Subject
Normal College (Faculty of Education)	Subject-specific Instruction (Biology)
	Subject-specific Instruction (Sports)
	Applied Psychology
	Psychology
	Pedagogy
	Modern Educational Technology
	Preschool Education
Sports Department	Sports Studies
School of Foreign Languages	Foreign Languages and Literatures
	Japanese Language and Literature
	Spanish Language and Literature
ShenZhen University Webank Institute Of Fintech	Management Science and Engineering
Institute of Microscale optoelectronics	Electronic and Information
	Optical engineering

Subject for Master Program





深圳大学
SHENZHEN UNIVERSITY

International Student Dormitory





- **WI-FI**



- **Reading Room**



- **En suite bathroom**



- **Laundry Facilities**



- **Pantry**

Admission

Requirements

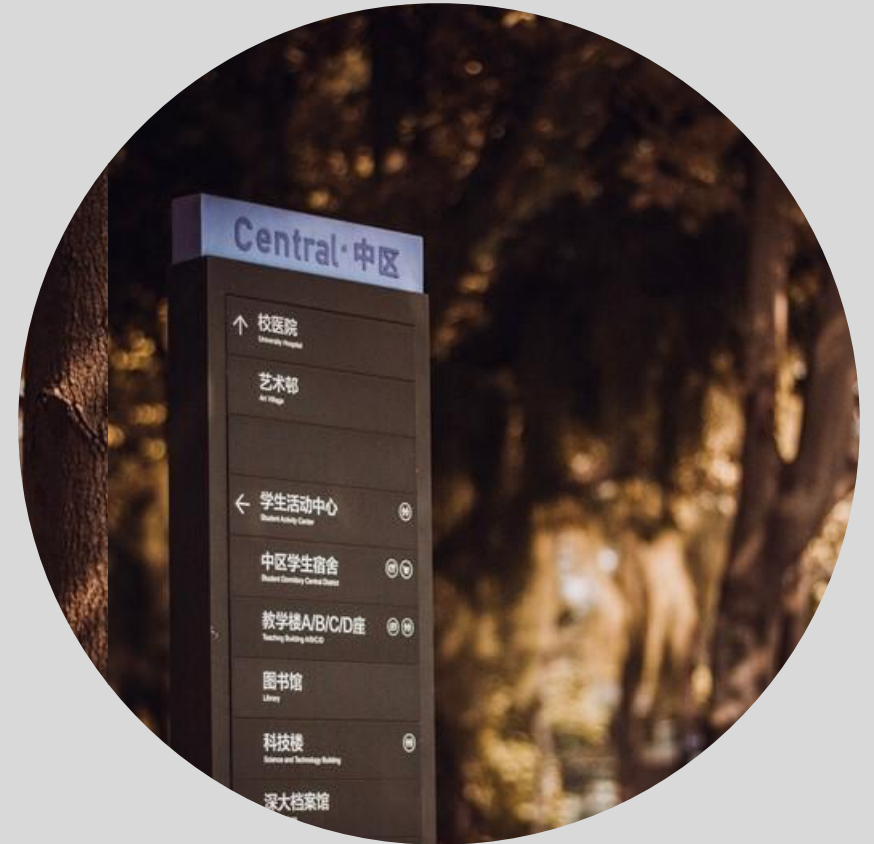
Be registered as a full-time undergraduate or graduate student at Home University

Have the ability to communicate in English or basic Chinese.

- The language level for IELTS 6.0 / TOEFL 85 or HSK4-5 is suggested for courses taught in English or Chinese with our registered Chinese students. The certificate is not required, you may send it for our reference.

- No language requirements for only Chinese language courses

Must have been studying in Home University for at least one semester





**HOW
TO**

APPLY

Collect following required documents from applicants

01

Supplementary form for Inbound Exchange Students
(深圳大学交换生入学申请补充表)
(please print out and sign)

02

1 digital color photo for campus card (1 inch, white background, 480(W)*640(L), named as "the name on passport "with jpg format)

03

Certificate of studentship

04

Transcript

05

Certificate for Language Proficiency (optional)

*

For the number of sending students, it is based on the agreement, and it may be negotiated in the situation of in balance.





Application Deadline

Spring semester (March~July)

**Nomination: by November 5
Submit documents and online application: by
November 20**

Autumn semester (September~January)

**Nomination: by May 5
Submit documents and online application:
by May 20**



Please send application documents by email or post:

The email address is huihh@szu.edu.cn

The mailing address is as following:

Hui huang(Ms.)

321 Office building, Shenzhen University, 3688 Nanhai Blvd,
Nanshan, Shenzhen, Guandong, P.R.China 518060

[Tel:86-755-2653-4940](tel:86-755-2653-4940)

***Application documents should be submitted by the coordinator of the university. Application from student directly is not acceptable.**

Please inform me by email if you send documents by mail



Applicant applies online

<http://lxs.szu.edu.cn/>

The instruction is as follows

Online Application Process

1. Visit our website: <http://lxs.szu.edu.cn/>

2. Click “Admissions”

↓
“在线申请”

The screenshot displays the website's navigation menu with the 'Admissions' tab selected. A red arrow points from the 'Admissions' tab to the '在线申请' (Online Application) option in the dropdown menu. The website header includes the Shenzhen University logo and the College of International Exchange logo. The main navigation bar contains links for Home, About CIE, Admissions, Teaching Management, Life in Campus, HSK Test, and Alumni. The dropdown menu for Admissions lists: Student Recruitment Brochure, Course Introduction, Online application and process, Tuition, Video of CIE, 在线申请 (highlighted), FAQ, and 专业目录. The page title is 'Admissions' and the breadcrumb trail is 'Home > Admissions'. A pagination bar shows 'Previous 1 Next'. The footer contains the URL: szu.edu.cn/szulxs/stuzs/stuLogin.action?fpage_id=216.

3. Agree, register and then login

深圳大学 SHENZHEN UNIVERSITY 国际交流学院 COLLEGE OF INTERNATIONAL EXCHANGE 086-755-26558894

在线报名 / On-line Admission

1) 上述各项中填写的信息和提供的材料真实无误。如因个人信息错误, 失真造成不良后果, 责任由本人承担。
All information and materials provided are factually true and correct. I understand that I may be subject to a range of possible disciplinary actions, including admission revocation or expulsion, should the information I've certified be false.

2) 新生 (New Students):
开学前提出退学, 经批准, 学费可退100%; 开学30日内提出退学, 经批准, 学费可退50%; 开学30日以后, 学费一律不退。
100% of the tuition fee can be refunded on condition that the student applies for quitting school and gets approval before school begins.
50% of the tuition fee can be refunded on condition that the student applies for quitting school and gets approval within 30 days after school begins.
50% of the tuition fee can be refunded on condition that the student applies for quitting school and gets approval within 30 days after school begins.
Tuition fee is not refundable over 30 days after school begins.

老生 (Keep-on Students):
签证一经办理成功学费一律不退。
Tuition fee is non-refundable once the visa application of keep-on student is done.
暑假班 (Summer Courses Students):
学费一经缴纳一律不退。
Tuition fee is non-refundable once the fee is paid.

3) 学院有权在开学一个月内根据学生选课人数增加或撤销班级, 以及调整上课教室。
The school reserves the right to adjust the class number for reasons arising from insufficient enrolment and the need arises and change the venue of class within 30 days after school begins.

我已经阅读以上协议。 / I have read the above agreement.

同意并注册/Agree and register

邮箱/E-mail:
密码/Password:
登录/Login

忘记密码? Forget password

提示: 老生或已经注册的学生请直接登录。
Tips: Keep-on students and registered students please log in directly.

版权所有©国际交流学院 联系电话: 086-755-26558894 755-26557139 邮箱: szulxs@szu.edu.cn

4. Fill in the necessary information, upload the necessary documents and submit them



Application Process

- 01** | After we receive application documents, we will post the following documents:
- Admission Notice
 - JW202 form
 - Other necessary documents

***Please inform me your mailing address when you send application documents.**

- 02** | Contact information:
Hui huang(Ms.)
Coordinator for inbound Exchange Students
Tel/Fax:86-755-2653-4940
[E-mail:huihh@szu.edu.cn](mailto:huihh@szu.edu.cn)



Application Process

Visa

Before student arrives China

Apply for X1

After student arrives China

Apply for resident permit
(the same term as the one on JW202, with multiple entry)



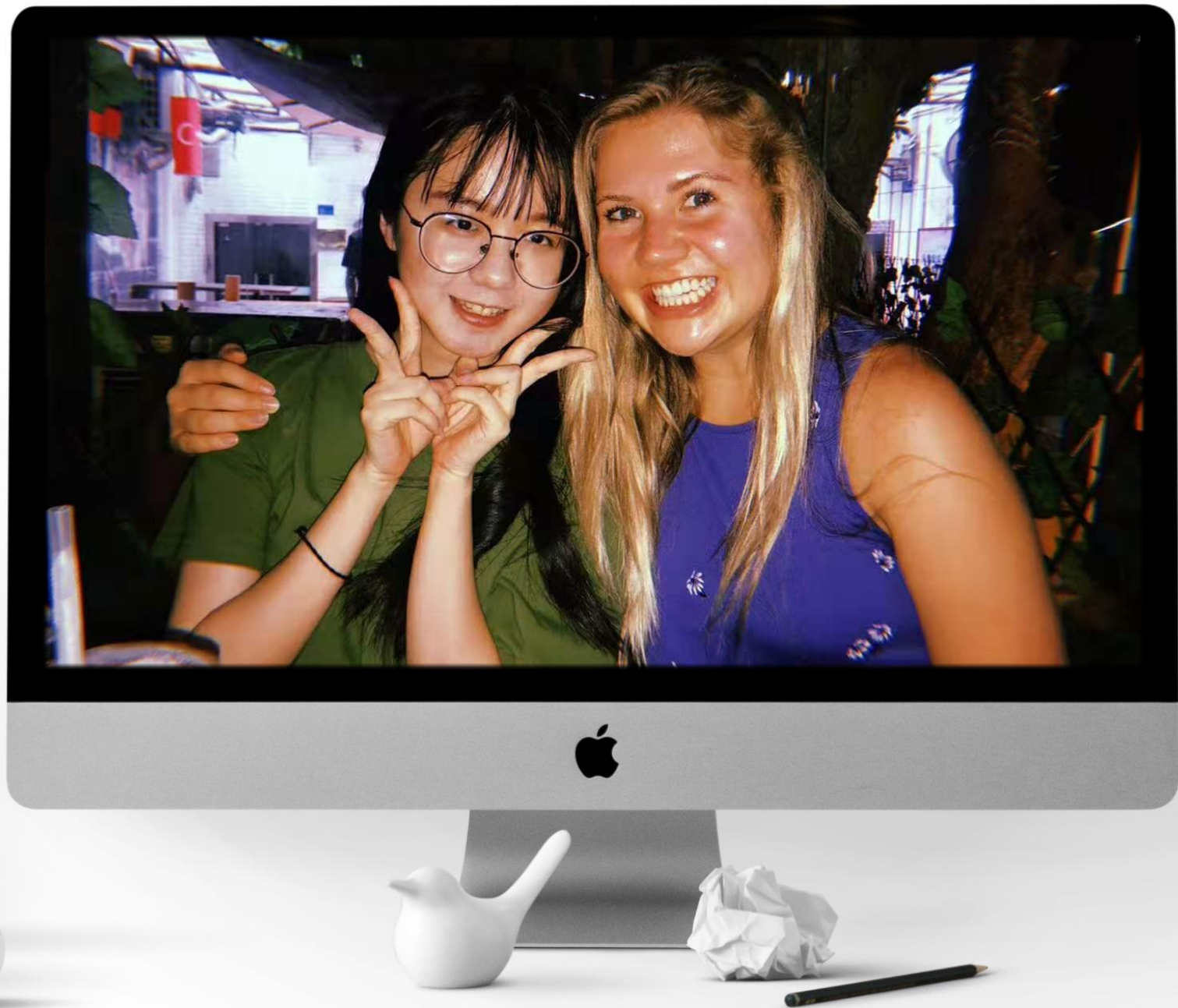
Activities

















一件两虫

ORALE

A photograph of a modern building's exterior, featuring a series of rectangular window openings. The building has a light-colored, textured facade. The windows are arranged in a row, and the lighting creates strong shadows, suggesting a bright, sunny day. The text "Living in Shenzhen" is overlaid on the left side of the image in a large, white, sans-serif font.

Living in Shenzhen

Accommodation

The international student dormitory(in campus)is provided

Dormitory Fee
(one semester for 1 person)

Single room RMB 8,000
Double room RMB 6,000

The dormitory fee may be exempt according to the agreement with partner university

Insurance

According to the regulation set by the Ministry of Education, International students are required to pay for the insurance fee after they arrive in China.

The fee for one person is:

RMB 400 / half year
RMB 800 / one year

Cost

The cost for living in Shenzhen is estimated as following :

Food: RMB 10~15 / meal
(in campus)
Transportation:
Average RMB 3~5 for public transit
About RMB15~20 for taxi
Total about RMB 2500/per month for one person

It may be different depend on the person and the situation.



See you in Shenzhen University